

5.34 The implementation of Policy DES10 is expanded in the Joint Design Guide (June 2022). This Design Guide has been prepared as part of South Oxfordshire and Vale of White Horse District Councils' commitment to securing the highest quality development within the districts. The guide builds upon and replaces previous local design guides and aligns with the National Design Guide (2019). It is intended to assist landowners, developers, applicants, agents, designers, and planners in the process of developing high quality development and in assessing its design quality. The guide is a Supplementary Planning Document (SPD). The section on Climate and sustainability sets out a series of design standards to achieve the details of Policy DES10.

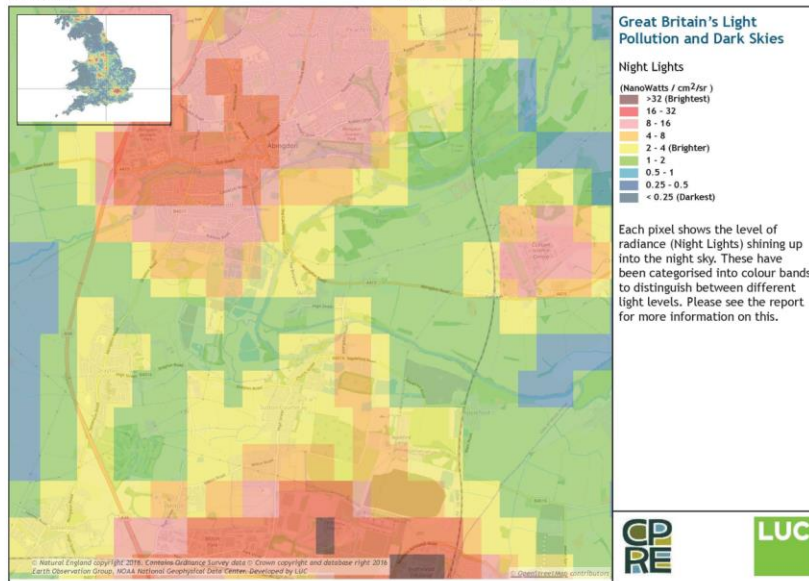
5.35 In November 2022 the District Council published a technical advice note on Policy DES10 of the Local Plan. The note comments that whilst it is not an adopted policy document, and should not be read as such, it sets out how applicants should demonstrate compliance with the adopted policy. It also comments that it will be of use to South Oxfordshire District Council officers, developers, and applicants, elected Members, as well as any other interested parties.

5.36 Policy CUL9 of this Plan builds on this comprehensive local approach. It will result in a situation where the neighbourhood plan would offer a supportive context for development proposals in the parish to achieve more sustainable solutions that those required by the Local Plan policy. Plainly the wider situation may be affected by changes to national or local planning policies on these matters in the Plan period.

Policy CUL10: Light pollution

As appropriate to their scale, nature and location development proposals should be designed to minimise the occurrence of light pollution and employ energy-efficient forms of lighting that reduces light scatter.

5.37 The Culham Community Led Plan 2014 identified that less street lighting was important to the local community. The strategic allocations and transport schemes in and adjacent to the parish will have a major impact on existing lighting levels. The brightest levels can already be seen to be straying into the village's night sky (see Plan E below). Many councils across England support measures to protect and enhance the dark night sky. The policy reflects the purpose and objectives of policies ENV11 and ENV12 on Pollution of the SODCLP. For all proposed developments, factors that will be considered when deciding the appropriateness of artificial lighting, include the location, the hours of operation, the quantity of lights proposed, brightness and control, and direction of the beam. Development proposals will be expected to demonstrate how they have been designed to prevent light pollution. Information on these measures should be submitted with applications, and proposals should have regard with the current guidelines established for rural areas by the Institute of Lighting Professionals. Where a development proposal is otherwise acceptable, but would potentially impact on light levels in the area, an appropriate lighting scheme will be secured by planning condition.



For best results the map should be printed at A4 landscape.