

CULHAM BATTERY ENERGY STORAGE FACILITY OXFORDSHIRE

List of plant species to be established within the new landscape areas

Prepared for:

Culham Storage Ltd

Date:
17.12.2024

Project Issue Number:
515_LPSPEC_01_Rev A

Culham BESS, Oxfordshire
List of species to be used within the new landscape areas

VERSION CONTROL RECORD			
Contract/Proposal Number:		515	
Authors Name: Chris McDermott			
Revision	Description of Status	Date	Reviewer Initials
	For planning		CM
A	Updated to accord with relocated Point of Connection compound.	17.12.24	CM
B			
C			

Contents

	Page
1 Introduction	4
2 Long Term Management	4
3 Grassland Establishment	5
4 Native Scrub Planting	10
5 Hedge planting	12
6 Specimen tree planting	13
7 Marginal Planting to the ponds (P1 and P2)	14
APPENDIX A	15
Location Plans	15
APPENDIX B	17
Landscape Plans	17

1 Introduction

1.1 This document specifies the species for the landscape design for a proposed Battery Energy Storage System (BESS) on land adjacent to the Culham Science Centre, Oxfordshire. The Site is located on plan Figures 1 and 2 within (Appendix A). This specification is to be read in conjunction with the planting plans which are presented in Appendix B. The drawings are:

515_PP_01_Rev A Planting Plan Sheet 1

515_PP_02_Rev A Planting Plan Sheet 2

515_PP_03_Rev A Planting Plan Sheet 3

515_PP_04_Rev A Planting Plan Sheet 4

515_PP_05_Rev A Planting Plan Sheet 5

1.2 It is anticipated that, if consent is granted, landscape will be one of the conditions and so the species list may change during the planning process.

1.3 The Landis England and Wales soil map data base (<https://www.landis.org.uk/soilscapes/>) identifies the soil over the majority of the Site where landscaping is proposed as Soilscape 10: Freely draining slightly acid sandy soils with low fertility due to a tendency to be freely draining and leaching.. The natural habitat type for this soil is acid dry pastures; acid deciduous and coniferous woodland; potential for lowland heath. The species mix has been chosen to be appropriate to this soil type.

2 Long Term Management

2.1 The completed landscape is to be managed in accordance with the Culhaml BESS Landscape and Ecological Management Plan (Sightline Landscape).

3 Grassland Establishment

3.1 The extensive reprofiling of the ground throughout most of the Site means that it will be necessary to create new sward types over most of the Site, with the benefit that more species rich wildflower swards can be created instead of the arable land that exists at present. Two types of grassland are proposed, as follows:

G1 – Species rich meadow grassland which will be managed by taking a traditional summer hay crop.

BFS 2 – ACID GRASSLAND WILDFLOWER SEED MIX FOR SANDY OR PEATY SOILS

3.2 Available from British Flora (<https://grassandflower.co.uk/british-flora/store/products/bfs-2-acid-grassland-wildflower-seed-mix-for-sandy-or-peaty-soils>). Or another supplier of a comparable product to approval. This is a diverse conservation seed mix of twenty UK native wildflowers and five grasses. Species adapted to base poor soils such as sheep's fescue, sheep's sorrel and heath bedstraw are frequent. It is seed mix suited for low fertility base poor (acidic) soils either on dry sandy soils or wetter peaty soils. It is represented by the NVC communities U1 to U5 and is a habitat of principle importance 'Lowland Dry Acid Grassland'. Suitable NVC Communities: U1; U2; U3; U4; U5

20% Wildflowers:

- 7% *Achillea millefolium* — (Yarrow)
- 0.5% *Campanula rotundifolia* – (Harebell)
- 12% *Centaurea nigra* – (Black knapweed)
- 0.5% *Galium saxatile* – (Heath bedstraw)
- 11% *Galium verum* – (Lady's bedstraw)
- 1% *Hieracium pilosella* – (Mouseear hawkweed)
- 4% *Hypochaeris radicata* – (Common cat's-ear)
- 11% *Lotus corniculatus* – (Common bird's-foot trefoil)
- 5% *Onobrychis vicifolia* – (Sainfoin)
- 1% *Potentilla erecta* – (Tormentil)
- 14% *Prunella vulgaris* – (Selfheal)
- 12% *Ranunculus acris* – (Meadow buttercup)

- 9% *Rumex acetosella* – (Sheep's sorrel)
- 6% *Stachys officianlis* – (Betony)
- 5% *Succisa pratensis* – (Devil's-bit scabious)
- 1% *Teucrium scorodonia* – (Wood sage)

80% Grasses:

- 5% *Agrostis capillaris* – (Common bent)
- 5% *Anthoxanthum odoratum* – (Sweet vernal grass)
- 40% *Cynosurus cristatus* – (Crested dog's-tail)
- 2% *Deschampsia flexuosa* – (Wavy hair grass)
- 48% *Festuca ovina* – (Sheep's fescue)

Sowing Rate: 5g/m². Contains: Wildflowers 20% (20 species) Grasses 80% (5 species)

3.3 G2 – Species rich tussocky grass sward

BFS 13 – TUSOCKY GRASSLAND WILDFLOWER MEADOW MIX

3.4 The Tussocky Tall Grassland Mix contains a moderate diversity of fifteen wildflowers, but the major component is coarse grasses that form tussocks, including Cocksfoot, Tall Fescue and Yorkshire Fog. Available from British Flora <https://grassandflower.co.uk/british-flora/store/products/bfs-13-tussocky-grassland-wildflower-meadow-mix/>. Or another supplier of a comparable product. Suitable NVC Communities: MG1. Sowing Rate: 5g/m²
Contains: Wildflowers 20% (15 species) Grasses 80% (8 species)

Wildflowers:

- 6% *Achillea millefolium* – (Yarrow)
- 4% *Agrimony eupatoria* – (Common Agrimony)
- 10% *Centaurea nigra* – (Black knapweed)
- 4% *Daucus carota* – (Wild Carrot)
- 3% *Knautia arvensis* – (Field Scabious)
- 5% *Lathyrus pratensis* – (Meadow vetchling)
- 10% *Leucanthemum vulgare* – (Ox-eye daisy)
- 5% *Lotus uliginosus* – (Greater bird's-foot trefoil)
- 4% *Lychnis flos-cuculi* – (Ragged robin)
- 10% *Plantago lanceolata* – (Ribwort plantain)

- 10% *Ranunculus acris* – (Meadow buttercup)
- 10% *Rumex acetosa* – (Common sorrel)
- 10% *Silene dioica* – (Red campion)
- 5% *Trifolium pratense* – (Red clover)
- 4% *Vicia cracca* – (Tufted vetch)

Grasses:

- 3% *Alopecurus pratensis* – (Meadow foxtail)
- 8% *Arrhenatherum elatius* – (False oat grass)
- 20% *Dactylis glomerata* – (Cock's-foot)
- 4% *Deschampsia cespitosa* – (Tufted hair grass)
- 25% *Festuca arundinacea* – (Tall fescue)
- 25% *Festuca pratensis* – (Meadow fescue)
- 10% *Festuca rubra* ssp *rubra* – (Red fescue)
- 5% *Holcus lanatus* – (Yorkshire fog)

3.5 All grassland areas are to be managed in accordance with the methodology set out within the Landscape and Environmental Management Plan (LEMP – Sightline Landscape).

Woodland Planting

3.6 The following native are to be planted within the woodland areas. The transplants are to be notch planted into newly topsoiled areas and the larger stock pit planted. Species and sizes are to be randomly mixed. Trees and shrubs are to be planted in a loose 2m grid. Once planted the area within the fencing is to be mulched to a depth of 75mm. A 5Kg sample of the mulch is to be approved by the landscape Architect before full loads are brought on site. Feathered trees to be secured to a single 75mm dia. Stake. Transplants to be secured to a 38mm square stake but tree shelters or guards are not required since the landscape areas are protected by fencing.

WOODLAND PLANTING W1 (as located on the Landscape masterplan)

%	English Name	Latin Name	Stock Size
3	Field Maple	<i>Acer campestre</i>	1.5 – 2.0m high feathered trees
5	Field Maple	<i>Acer campestre</i>	60 – 80cm high BR transplants
2	Birch	<i>Betula pendula</i>	1.5 – 2.0m high feathered trees CG
5	Birch	<i>Betula pendula</i>	60 – 80cm high BR transplants
3	Hornbeam	<i>Carpinus betula</i>	1.5 -2.0m high feathered tree
4	Hornbeam	<i>Carpinus betula</i>	60 – 80cm high BR transplants
5	Hawthorn	<i>Crataegus monogyna</i>	1.5 – 2.0m high feathered trees
10	Hawthorn	<i>Crataegus monogyna</i>	60 – 80cm high BR transplants
3	Dogwood	<i>Cornus sanguinea</i>	60 – 80cm high BR transplants
9	Hazel	<i>Corylus avellana</i>	60 – 80cm high BR transplants
3	Holly	<i>Ilex aquifolium</i>	60 – 80cm high BR transplants
2	Crab apple	<i>Malus sylvestris</i>	1.5 – 2.0m high feathered trees
2	Crab apple	<i>Malus sylvestris</i>	60 – 80cm high BR transplants
3	Sweet Chestnut	<i>Castanea sativa</i>	2.0 – 2.5m high feathered trees
4	Sweet Chestnut	<i>Castanea sativa</i>	60 – 80cm high BR transplants
7	Blackthorn	<i>Prunus spinosa</i>	60 – 80cm BR Transplant
7	Scots Pine	<i>Pinus sylvestris</i>	40-60cm BR Transplant 1U2
3	Wild Cherry	<i>Prunus avium</i>	1.5 – 2.0m high feathered trees
5	Wild Cherry	<i>Prunus avium</i>	60 – 80cm high BR Transplant
5	Native oak	<i>Quercus robur</i>	60 – 80cm high BR Transplant
4	Native oak	<i>Quercus robur</i>	0.9 – 1.5m high Feathered tree
3	Mountain Ash	<i>Sorbus aucuparia</i>	0.9 – 1.5m high feathered tree
3	Guelder Rose	<i>Viburnum opulus</i>	60 – 80cm girth BR transplants

WOODLAND PLANTING W2 (as located on the Landscape masterplan)

%	English Name	Latin Name	Stock Size
3	Field Maple	<i>Acer campestre</i>	1.5 – 2.0m high feathered trees
6	Field Maple	<i>Acer campestre</i>	60 – 80cm high BR transplants
3	Birch	<i>Betula pendula</i>	1.5 – 2.0m high feathered trees CG
6	Birch	<i>Betula pendula</i>	60 – 80cm high BR transplants
2	Hornbeam	<i>Carpinus betula</i>	1.5 -2.0m high feathered tree
5	Hornbeam	<i>Carpinus betula</i>	60 – 80cm high BR transplants
5	Hawthorn	<i>Crataegus monogyna</i>	1.5 – 2.0m high feathered trees
10	Hawthorn	<i>Crataegus monogyna</i>	60 – 80cm high BR transplants
2	Dogwood	<i>Cornus sanguinea</i>	60 – 80cm high BR transplants
2	Sweet Chestnut	<i>Castanea sativa</i>	2.0 – 2.5m high feathered trees
5	Sweet Chestnut	<i>Castanea sativa</i>	60 – 80cm high BR transplants
10	Hazel	<i>Corylus avellana</i>	60 – 80cm high BR transplants
5	Beech	<i>Fagus sylvatica</i>	60 – 80cm high BR transplants
2	Holly	<i>Ilex aquifolium</i>	60 – 80cm high BR transplants
2	Aspen	<i>Populus tremula</i>	1.5 – 2.0m high feathered trees
3	Aspen	<i>Populus tremula</i>	60 – 80cm high BR transplants

5	Blackthorn	<i>Prunus spinosa</i>	60 – 80cm BR Transplant
5	Scots Pine	<i>Pinus sylvestris</i>	40-60cm BR Transplant 1U2
2	Wild Cherry	<i>Prunus avium</i>	1.5 – 2.0m high feathered trees
3	Wild Cherry	<i>Prunus avium</i>	60 – 80cm high BR Transplant
5	Native oak	<i>Quercus robur</i>	60 – 80cm high BR Transplant
3	Native oak	<i>Quercus robur</i>	0.9 – 1.5m high Feathered tree
2	Mountain Ash	<i>Sorbus aucuparis</i>	0.9 – 1.5m high feathered tree
4	Guelder Rose	<i>Viburnum opulus</i>	60 – 80cm girth BR transplants

WOODLAND PLANTING W3 (as located on the Landscape masterplan)

%	English Name	Latin Name	Stock Size
4	Field Maple	<i>Acer campestre</i>	1.5 – 2.0m high feathered trees
6	Field Maple	<i>Acer campestre</i>	60 – 80cm high BR transplants
3	Birch	<i>Betula pendula</i>	1.5 – 2.0m high feathered trees CG
10	Birch	<i>Betula pendula</i>	60 – 80cm high BR transplants
1	Hornbeam	<i>Carpinus betula</i>	1.5 -2.0m high feathered tree
10	Hornbeam	<i>Carpinus betula</i>	60 – 80cm high BR transplants
6	Hawthorn	<i>Crataegus monogyna</i>	1.5 – 2.0m high feathered trees
15	Hawthorn	<i>Crataegus monogyna</i>	60 – 80cm high BR transplants
2	Dogwood	<i>Cornus sanguinea</i>	60 – 80cm high BR transplants
14	Hazel	<i>Corylus avellana</i>	60 – 80cm high BR transplants
5	Holly	<i>Ilex aquifolium</i>	60 – 80cm high BR transplants
2	Crab apple	<i>Malus sylvestris</i>	1.5 – 2.0m high feathered trees
8	Blackthorn	<i>Prunus spinosa</i>	60 – 80cm BR Transplant
3	Wild Cherry	<i>Prunus avium</i>	1.5 – 2.0m high feathered trees
5	Wild Cherry	<i>Prunus avium</i>	60 – 80cm high BR Transplant
3	Native oak	<i>Quercus robur</i>	60 – 80cm high BR Transplant
3	Wayfaring Tree	<i>Viburnum lantana</i>	60 – 80cm girth BR transplants

WOODLAND PLANTING W4 (as located on the Landscape masterplan)

%	English Name	Latin Name	Stock Size
3	Field Maple	<i>Acer campestre</i>	1.5 – 2.0m high feathered trees
7	Field Maple	<i>Acer campestre</i>	60 – 80cm high BR transplants
3	Birch	<i>Betula pendula</i>	1.5 – 2.0m high feathered trees CG
7	Birch	<i>Betula pendula</i>	60 – 80cm high BR transplants
3	Hornbeam	<i>Carpinus betula</i>	1.5 -2.0m high feathered tree
5	Hornbeam	<i>Carpinus betula</i>	60 – 80cm high BR transplants
5	Hawthorn	<i>Crataegus monogyna</i>	1.5 – 2.0m high feathered trees
10	Hawthorn	<i>Crataegus monogyna</i>	60 – 80cm high BR transplants
2	Dogwood	<i>Cornus sanguinea</i>	60 – 80cm high BR transplants
2	Sweet Chestnut	<i>Castanea sativa</i>	2.0 – 2.5m high feathered trees
5	Sweet Chestnut	<i>Castanea sativa</i>	60 – 80cm high BR transplants
10	Hazel	<i>Corylus avellana</i>	60 – 80cm high BR transplants

2	Holly	<i>Ilex aquifolium</i>	60 – 80cm high BR transplants
2	Aspen	<i>Populus tremula</i>	1.5 – 2.0m high feathered trees
3	Aspen	<i>Populus tremula</i>	60 – 80cm high BR transplants
5	Blackthorn	<i>Prunus spinosa</i>	60 – 80cm BR Transplant
5	Scots Pine	<i>Pinus sylvestris</i>	40-60cm BR Transplant 1U2
2	Wild Cherry	<i>Prunus avium</i>	1.5 – 2.0m high feathered trees
3	Wild Cherry	<i>Prunus avium</i>	60 – 80cm high BR Transplant
7	Native oak	<i>Quercus robur</i>	60 – 80cm high BR Transplant
3	Native oak	<i>Quercus robur</i>	0.9 – 1.5m high Feathered tree
2	Mountain Ash	<i>Sorbus aucuparis</i>	0.9 – 1.5m high feathered tree
4	Guelder Rose	<i>Viburnum opulus</i>	60 – 80cm girth BR transplants

4 Native Scrub Planting

4.1 The following native trees and shrubs are to be planted in scrub areas. Species and sizes are to be randomly mixed and planted at distances of between 1m and 4m in a loose grid to give an average density of 1 plant per 6 m².

SCRUB PLANTING S1 (as located on the Landscape Masterplan)

%	English Name	Latin Name	Stock Size
5	Field Maple	<i>Acer campestre</i>	60 – 80cm high BR transplants
24	Hawthorn	<i>Crataegus monogyna</i>	60 – 80cm high BR transplants
10	Dogwood	<i>Cornus sanguinea</i>	60 – 80cm high BR transplants
10	Hazel	<i>Corylus avellana</i>	60 – 80cm high BR transplants
5	Holly	<i>Ilex aquifolium</i>	60 – 80cm high BR transplants
5	Crab apple	<i>Malus sylvestris</i>	2.0 – 2.5m high feathered trees
15	Blackthorn	<i>Prunus avium</i>	60 – 80cm high BR transplants
5	Wild Cherry	<i>Prunus avium</i>	2.0 – 2.5m high feathered trees
10	Dog Rose	<i>Rosa canina</i>	60 – 80cm high BR transplants
5	Field Rose	<i>Rosa arvensis</i>	69 – 80 cm high BR transplants
3	Mountain Ash	<i>Sorbus aucuparia</i>	0.9 – 1.5m high feathered tree
3	Guelder Rose	<i>Viburnum opulus</i>	60 – 80cm girth BR transplants

SCRUB PLANTING S2 (as located on the Landscape Masterplan)

%	English Name	Latin Name	Stock Size
5	Field Maple	<i>Acer campestre</i>	60 – 80cm high BR transplants
30	Hawthorn	<i>Crataegus monogyna</i>	60 – 80cm high BR transplants
10	Dogwood	<i>Cornus sanguinea</i>	60 – 80cm high BR transplants
10	Hazel	<i>Corylus avellana</i>	60 – 80cm high BR transplants
5	Holly	<i>Ilex aquifolium</i>	60 – 80cm high BR transplants
5	Crab apple	<i>Malus sylvestris</i>	2.0 – 2.5m high feathered trees

20	Blackthorn	<i>Prunus avium</i>	60 – 80cm high BR transplants
5	Wild Cherry	<i>Prunus avium</i>	2.0 – 2.5m high feathered trees
10	Dog Rose	<i>Rosa canina</i>	60 – 80cm high BR transplants
5	Field Rose	<i>Rosa arvensis</i>	69 – 80 cm high BR transplants

Replaced with W1 on the plan

SCRUB PLANTING S3 (as located on the Landscape Masterplan)

%	English Name	Latin Name	Stock Size
5	Field Maple	<i>Acer campestre</i>	60 – 80cm high BR transplants
25	Hawthorn	<i>Crataegus monogyna</i>	60 – 80cm high BR transplants
10	Dogwood	<i>Cornus sanguinea</i>	60 – 80cm high BR transplants
15	Hazel	<i>Corylus avellana</i>	60 – 80cm high BR transplants
5	Holly	<i>Ilex aquifolium</i>	60 – 80cm high BR transplants
5	Crab apple	<i>Malus sylvestris</i>	2.0 – 2.5m high feathered trees
20	Blackthorn	<i>Prunus avium</i>	60 – 80cm high BR transplants
5	Wild Cherry	<i>Prunus avium</i>	2.0 – 2.5m high feathered trees
10	Dog Rose	<i>Rosa canina</i>	60 – 80cm high BR transplants
5	Field Rose	<i>Rosa arvensis</i>	69 – 80 cm high BR transplants

SCRUB PLANTING S4 (as located on the Landscape Masterplan)

%	English Name	Latin Name	Stock Size
25	Hawthorn	<i>Crataegus monogyna</i>	60 – 80cm high BR transplants
12.5	Dogwood	<i>Cornus sanguinea</i>	60 – 80cm high BR transplants
20	Hazel	<i>Corylus avellana</i>	60 – 80cm high BR transplants
5	Holly	<i>Ilex aquifolium</i>	60 – 80cm high BR transplants
20	Blackthorn	<i>Prunus avium</i>	60 – 80cm high BR transplants
10	Dog Rose	<i>Rosa canina</i>	60 – 80cm high BR transplants
7.5	Goat Willow	<i>Salix caprea</i>	60 – 80 cm high BR transplants

Omitted due to conflict with new internal BESS layout

SCRUB PLANTING S5 (as located on the Landscape Masterplan)

%	English Name	Latin Name	Stock Size
5	Field Maple	<i>Acer campestre</i>	60 – 80cm high BR transplants
25	Hawthorn	<i>Crataegus monogyna</i>	60 – 80cm high BR transplants
10	Dogwood	<i>Cornus sanguinea</i>	60 – 80cm high BR transplants
15	Hazel	<i>Corylus avellana</i>	60 – 80cm high BR transplants
5	Holly	<i>Ilex aquifolium</i>	60 – 80cm high BR transplants
5	Crab apple	<i>Malus sylvestris</i>	2.0 – 2.5m high feathered trees
15	Blackthorn	<i>Prunus avium</i>	60 – 80cm high BR transplants
5	Wild Cherry	<i>Prunus avium</i>	2.0 – 2.5m high feathered trees
10	Dog Rose	<i>Rosa canina</i>	60 – 80cm high BR transplants
5	Field Rose	<i>Rosa arvensis</i>	69 – 80 cm high BR transplants

Omitted because it was associated with the old POC compound

SCRUB PLANTING S6 (as located on the Landscape Masterplan)

%	English Name	Latin Name	Stock Size
---	--------------	------------	------------

15	Field Maple	<i>Acer campestre</i>	60 – 80cm high BR transplants
30	Hawthorn	<i>Crataegus monogyna</i>	60 – 80cm high BR transplants
30	Dogwood	<i>Cornus sanguinea</i>	60 – 80cm high BR transplants
25	Hazel	<i>Corylus avellana</i>	60 – 80cm high BR transplants

Omitted because it was associated with the old POC compound

SCRUB PLANTING S7 (as located on the Landscape Masterplan)

%	English Name	Latin Name	Stock Size
25	Hawthorn	<i>Crataegus monogyna</i>	60 – 80cm high BR transplants
15	Dogwood	<i>Cornus sanguinea</i>	60 – 80cm high BR transplants
25	Hazel	<i>Corylus avellana</i>	60 – 80cm high BR transplants
5	Holly	<i>Ilex aquifolium</i>	60 – 80cm high BR transplants
20	Blackthorn	<i>Prunus avium</i>	60 – 80cm high BR transplants
10	Dog Rose	<i>Rosa canina</i>	60 – 80cm high BR transplants

5 Hedge planting

5.1 To be planted in a minimum 400mm depth topsoil, previously stripped from the Site and planted as two staggered rows, 400 mm between rows and plants. The species are to be randomly mixed.

HEDGE PLANTING H1

Key	English Name	Latin Name	Stock Size
15%	Field maple	<i>Acer campestre</i>	60 – 80cm high BR transplants
20%	Hawthorn	<i>Crataegus monogyna</i>	60 – 80cm high BR transplants
5%	Dogwood	<i>Cornus sanguinea</i>	60 – 80cm high BR transplants
15%	Hornbeam	<i>Carpinus betulus</i>	60 – 80cm high BR transplants
10%	Hazel	<i>Corylus avellana</i>	60 – 80cm high BR transplants
10%	Beech	<i>Fagus sylvatica</i>	60 – 80cm high BR transplant
5%	Holly	<i>Ilex aquifolium</i>	2 Litre transplants
2%	Honeysuckle	<i>Lonicera periclymenum</i>	2 Litre transplants
5%	Blackthorn	<i>Prunus spinosa</i>	60 – 80cm high BR transplants
7%	Dog rose	<i>Rosa canina</i>	60 – 80cm high BR transplants
6%	Guelder Rose	<i>Viburnum opulus</i>	60 – 80cm high BR transplants

HEDGE PLANTING H2

Key	English Name	Latin Name	Stock Size
15%	Field maple	<i>Acer campestre</i>	60 – 80cm high BR transplants
25%	Hawthorn	<i>Crataegus monogyna</i>	60 – 80cm high BR transplants
5%	Dogwood	<i>Cornus sanguinea</i>	60 – 80cm high BR transplants
20%	Hazel	<i>Corylus avellana</i>	60 – 80cm high BR transplants
10%	Beech	<i>Fagus sylvatica</i>	60 – 80cm high BR transplant
5%	Holly	<i>Ilex aquifolium</i>	2 Litre transplants
2%	Honeysuckle	<i>Lonicera periclymenum</i>	2 Litre transplants

5%	Blackthorn	<i>Prunus spinosa</i>	60 – 80cm high BR transplants
7%	Dog rose	<i>Rosa canina</i>	60 – 80cm high BR transplants
6%	Wayfaring Rose	<i>Viburnum lantana</i>	60 – 80cm high BR transplants

HEDGE PLANTING H3

Key	English Name	Latin Name	Stock Size
30%	Field maple	Acer campestre	60 – 80cm high BR transplants
30%	Hawthorn	<i>Crataegus monogyna</i>	60 – 80cm high BR transplants
5%	Dogwood	<i>Cornus sanguinea</i>	60 – 80cm high BR transplants
18%	Hazel	<i>Corylus avellana</i>	60 – 80cm high BR transplants
10%	Beech	<i>Fagus sylvatica</i>	60 – 80cm high BR transplant
5%	Holly	<i>Ilex aquifolium</i>	2 Litre transplants
2%	Honeysuckle	<i>Lonicera periclymenum</i>	2 Litre transplants
7%	Dog rose	<i>Rosa canina</i>	60 – 80cm high BR transplants
6%	Wayfaring Rose	<i>Viburnum lantana</i>	60 – 80cm high BR transplants

HEDGE PLANTING H4

Key	English Name	Latin Name	Stock Size
15%	Field maple	<i>Acer campestre</i>	60 – 80cm high BR transplants
35%	Hawthorn	<i>Crataegus monogyna</i>	60 – 80cm high BR transplants
5%	Dogwood	<i>Cornus sanguinea</i>	60 – 80cm high BR transplants
20%	Hazel	<i>Corylus avellana</i>	60 – 80cm high BR transplants
5%	Holly	<i>Ilex aquifolium</i>	2 Litre transplants
2%	Honeysuckle	<i>Lonicera periclymenum</i>	2 Litre transplants
5%	Blackthorn	<i>Prunus spinosa</i>	60 – 80cm high BR transplants
7%	Dog rose	<i>Rosa canina</i>	60 – 80cm high BR transplants
6%	Wayfaring Rose	<i>Viburnum lantana</i>	60 – 80cm high BR transplants

6 Specimen tree planting

6.1 The following are to be pit planted in the positions shown on the landscape plans. All trees are to be container grown.

Key	English Name	Latin Name	Stock Size
Ac	Field Maple	<i>Acer campestre</i>	Heavy Standard tree 12- 14cm girth
Ag	Alder	<i>Alnus glutinosa</i>	Heavy Standard tree 12- 14cm girth
Bp	Birch	<i>Betula pendula</i>	Heavy Standard tree 12- 14cm girth
Cm	Hawthorn	<i>Crataegus monogyna</i>	Heavy Standard tree 12 – 14cm girth
Cs	Sweet Chestnut	<i>Castanea sativa</i>	Heavy Standard tree 12 – 14cm girth
Ms	Crab apple	<i>Malus sylvestris</i>	Heavy Standard Tree 12 -14cm girth
Pa	Cherry	<i>Prunus avium</i>	Heavy Standard tree 12- 14cm girth
Pn	Black Poplar	<i>Populus nigra betulifolia</i>	0.9 – 1.5m high feathered tree
Ps	Scots Pine	<i>Pinus sylvestris</i>	1.5 – 2m high, bushy CG specimen
Pt	Aspen	<i>Populus tremula</i>	Heavy Standard tree 12- 14cm girth
Qr	Native oak	<i>Quercus robur</i>	Heavy Standard tree 12- 14cm girth

Qc	Turkish oak	<i>Quercus cerris</i>	Heavy Standard tree 12- 14cm girth
Sa	White willow	<i>Salix alba</i>	Heavy Standard tree 12- 14cm girth

7 Marginal Planting to the ponds (P1 and P2)

7.1 The following shall be planted at a density of 4 plants per metre length of the permanent water pond margin in the positions shown on the Landscape Masterplan. Once the pond has been excavated it is to be left to settle and form a typical spring water level. The plants are to be planted in spring at appropriate depths around the margins.

5%	<i>Alisma plantago-aquatica</i>	Water Plantain
5%	<i>Baldellia ranunculoides</i>	Lesser water plantain
7%	<i>Butomus umbellatus</i>	Flowering rush
7%	<i>Caltha palustris</i>	Marsh marigold
5%	<i>Carex flacca</i>	Glaucous Sedge
5%	<i>Carex acutiformi</i>	Lesser Pond Sedge
7%	<i>Filipendula ulmaria</i>	Meadowsweet
5%	<i>Geum rivale</i>	Water Avens
5%	<i>Hypericum tetrapterum</i>	Square-stalked St. John's wort
7%	<i>Iris pseudacorus</i>	Yellow Flag
5%	<i>Mentha aquatica</i>	Water Mint
5%	<i>Myosotis scorpioides</i>	Water Forget-me-not
8%	<i>Lychnis flos-cuculi</i>	Ragged robin
3%	<i>Scrophularia auriculata</i>	Water figwort
5%	<i>Persicaria bistorta</i>	Adderwort
5%	<i>Potentilla palustris</i>	Marsh cinquefoil
5%	<i>Stachys palustris</i>	Marsh Woundwort
6%	<i>Ranunculus lingua Grandiflorus</i>	Greater spearwort

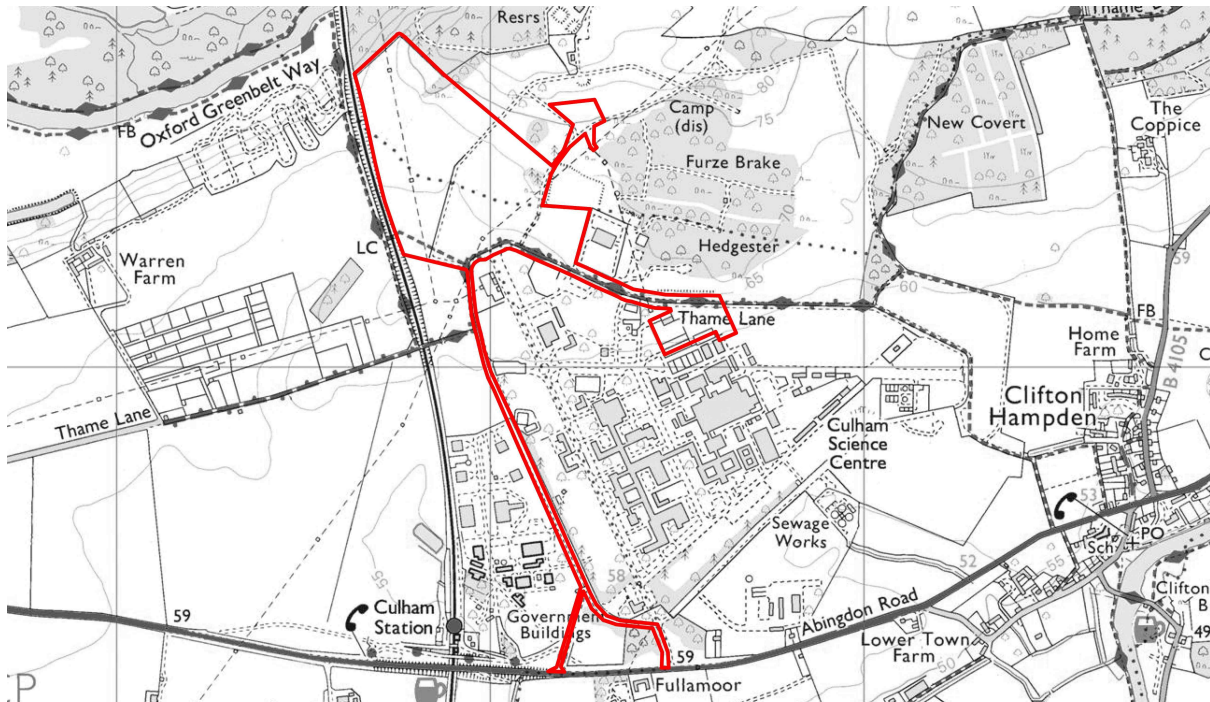
7.2 The following floating species are to be placed in the ponds:

25%	<i>Ceratophyllum demersum</i>	Rigid hornwort
25%	<i>Myriophyllum spicatum</i>	Spiked water-milfoil
20%	<i>Ranunculus aquatilis</i>	Common water-crowfoot
15%	<i>Hydrocharis morsus-ranae</i>	Frogbit
15%	<i>Hottonia palustris</i>	Water violet

APPENDIX A

LOCATION PLANS

Culham BESS, Oxfordshire
List of species to be used within the new landscape areas



Based on an Ordnance Survey Map with Permission of His Majesties Stationary Office Sightline Licence 0100031673

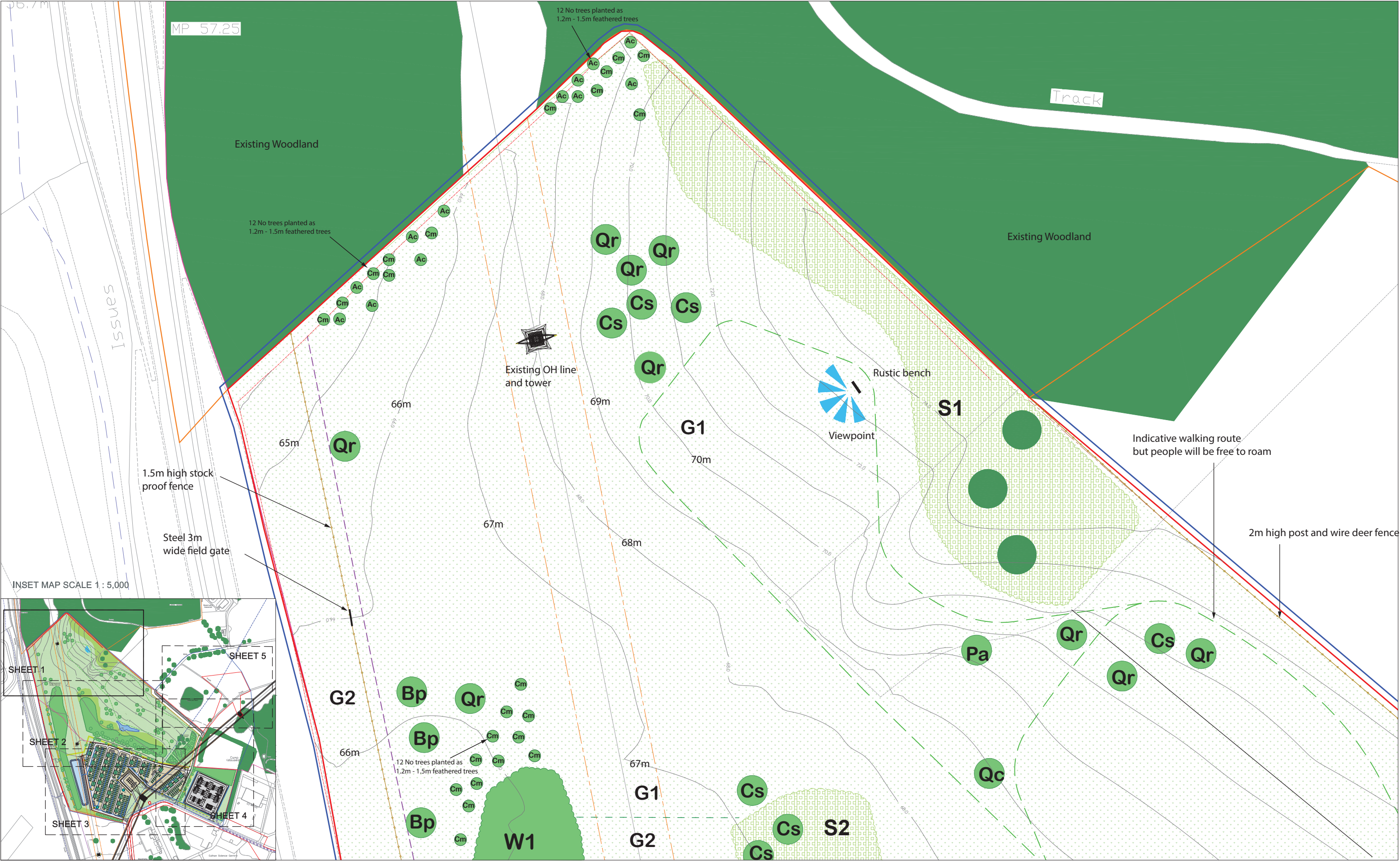
Figure 1: Location Plan (Ordnance Survey)



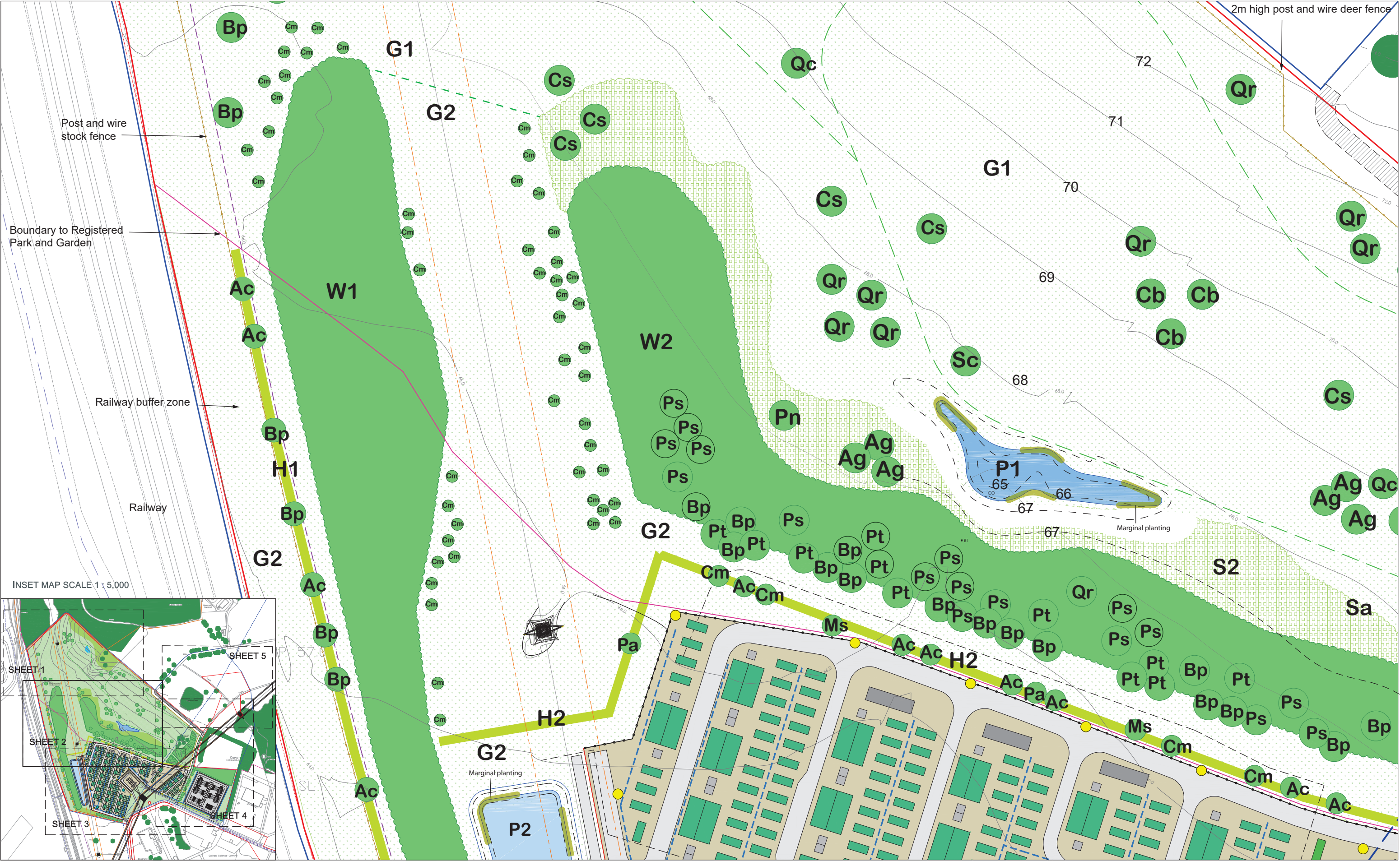
Figure 2: Location Plan (Google Aerial)


APPENDIX B

LANDSCAPE PLANS




<div><div><div><div></div></div><div>STATERA</div><div>BALANCING THE GRID</div></div></div>	Specimen tree planting				<div><div>Revision</div><div>Date</div><div>Comment</div></div> <div><div>A</div><div>17.12.24</div><div>Planting plans updated to accord with the relocation of the POC compound</div></div>			ON BEHALF STATERA		PROJECT CULHAM BATTERY ENERGY STORAGE SYSTEM	
	Key	English Name	Latin Name	Stock Size	G1	Species rich flowering meadow sward established through seeding.			<div><div><div><div></div></div><div>N</div></div><div><div>0</div><div>5</div><div>10</div><div>25</div><div>50m</div></div><div>SCALE 1:500</div></div>	<div><div>DATE</div><div>SCALE</div><div>DWG No</div><div>APPROVED</div></div> <div><div>17.12.24</div><div>1 : 500 @ A1</div><div>515_PP_01_Rev A</div><div>CMcD</div></div>	<div><div>TITLE</div></div> <div><div>PLANTING PLAN</div><div>SHEET 1 of 5</div></div>
	Ac	Field Maple	<i>Acer campestre</i>	Heavy Standard tree 12- 14cm girth	G2	Species rich tussock grass flowering meadow established through seeding.					
	Ag	Alder	<i>Alnus glutinosa</i>	Heavy Standard tree 12- 14cm girth	W1 to W4	Proposed woodland planting, see specification for species sies and mixes.					
	Bp	Birch	<i>Betula pendula</i>	Heavy Standard tree 12- 14cm girth	H1 to H4	Proposed native hedge planting, see specification for species sies and mixes.					
	Cm	Hawthorn	<i>Crataegus monogyna</i>	Heavy Standard tree 12- 14cm girth	S1 to S7	Proposed native scrub planting, see specification for species sies and mixes.					
	Cs	Sweet Chestnut	<i>Castanea sativa</i>	Heavy Standard tree 12- 14cm girth	P1 and P2	Ponds, see specification for marginal planting.					
	Ms	Crab apple	<i>Malus sylvestris</i>	Heavy Standard tree 12- 14cm girth							
	Pa	Cherry	<i>Prunus avium</i>	Heavy Standard tree 12- 14cm girth							
	Pn	Black Poplar	<i>Populus nigra betulifolia</i>	0.9 – 1.5m high feathered tree							
Ps	Scots Pine	<i>Pinus sylvestris</i>	1.5 – 2m high, bushy CO specimen								
Pt	Aspen	<i>Populus tremula</i>	Heavy Standard tree 12- 14cm girth								
Qr	Native oak	<i>Quercus robur</i>	Heavy Standard tree 12- 14cm girth								
Qc	Turkish oak	<i>Quercus cerris</i>	Heavy Standard tree 12- 14cm girth								
Sa	White willow	<i>Salix alba</i>	Heavy Standard tree 12- 14cm girth								






STATERA
BALANCING THE GRID



Key	English Name	Latin Name	Stock Size
Ac	Field Maple	<i>Acer campestre</i>	Heavy Standard tree 12- 14cm girth
Ag	Alder	<i>Alnus glutinosa</i>	Heavy Standard tree 12- 14cm girth
Bp	Birch	<i>Betula pendula</i>	Heavy Standard tree 12- 14cm girth
Cm	Hawthorn	<i>Crataegus monogyna</i>	Heavy Standard tree 12- 14cm girth
Cs	Sweet Chestnut	<i>Castanea sativa</i>	Heavy Standard tree 12- 14cm girth
Ms	Crab apple	<i>Malus sylvestris</i>	Heavy Standard tree 12- 14cm girth
Pa	Cherry	<i>Prunus avium</i>	Heavy Standard tree 12- 14cm girth
Pn	Black Poplar	<i>Populus nigra betulifolia</i>	0.9 – 1.5m high feathered tree
Ps	Scots Pine	<i>Pinus sylvestris</i>	1.5 – 2m high, bushy CG specimen
Pt	Aspen	<i>Populus tremula</i>	Heavy Standard tree 12- 14cm girth
Qr	Native oak	<i>Quercus robur</i>	Heavy Standard tree 12- 14cm girth
Qc	Turkish oak	<i>Quercus cerris</i>	Heavy Standard tree 12- 14cm girth
Sa	White willow	<i>Salix alba</i>	Heavy Standard tree 12- 14cm girth



1.2 - 1.5m high feathered trees

G1

G2

W1 to W4

H1 to H4

S1 to S7

P1 and P2

Species rich flowering meadow sward established through seeding.

Species rich tussock grass flowering meadow established through seeding.

Proposed woodland planting, see specification for species sies and mixes.

Proposed native hedge planting, see specification for species sies and mixes.

Proposed native scrub planting, see specification for species sies and mixes.

Ponds, see specification for marginal planting.

Revision

Date

Comment

A

17.12.24

Planting plans updated to accord with the relocation of the POC compound

ON BEHALF

STATERA

DATE

17.12.24

SCALE

1 : 500 @ A1

DWG No

515_PP_02_Rev A

APPROVED

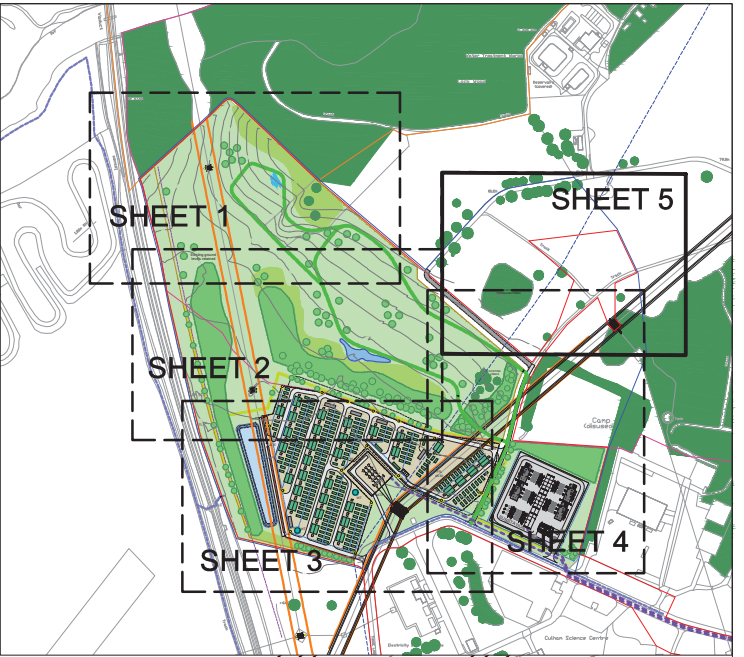
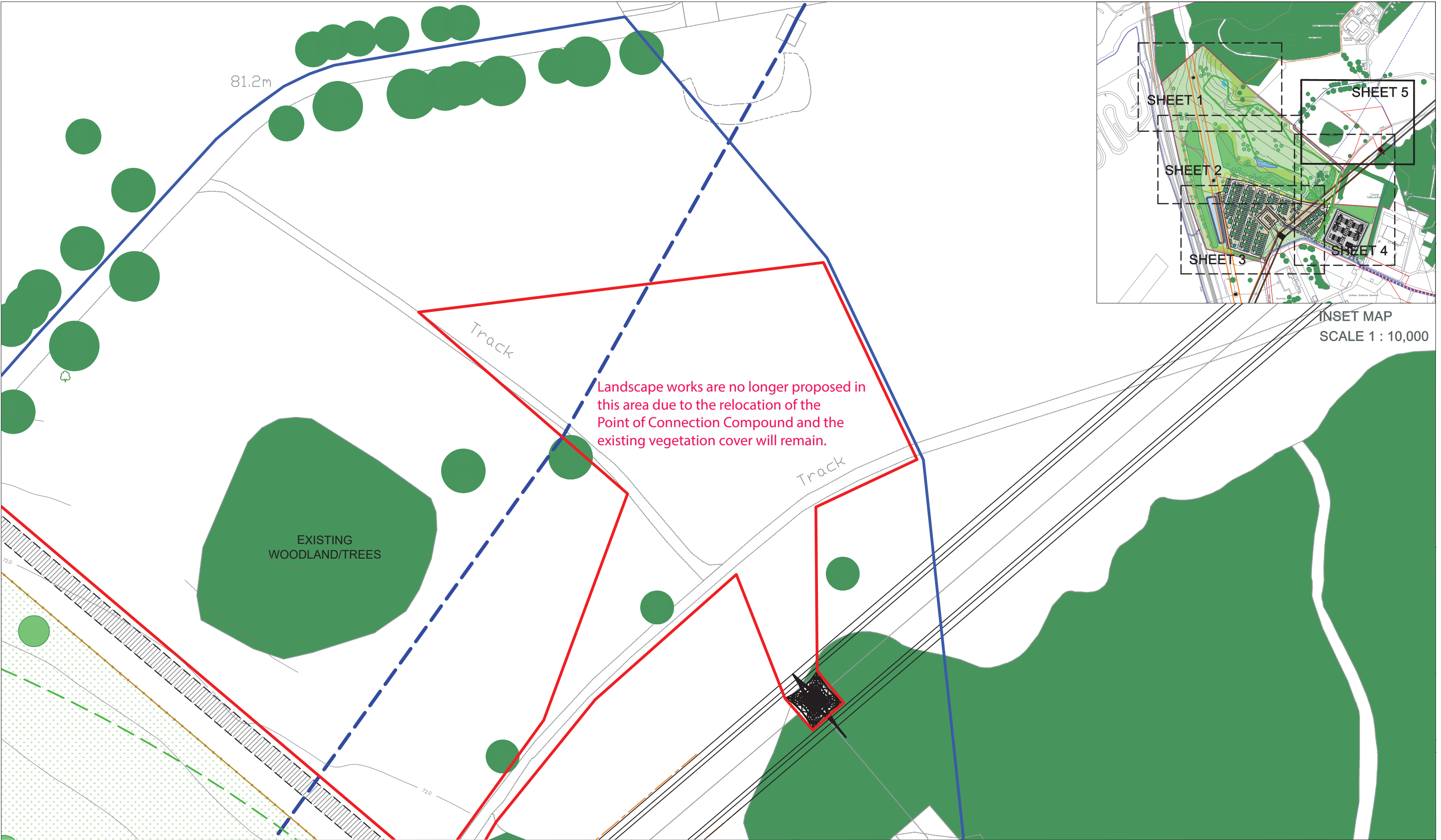
CMcD

PROJECT



CULHAM BATTERY ENERGY STORAGE SYSTEM

TITLE

PLANTING PLAN SHEET 2 of 5



INSET MAP
SCALE 1 : 10,000

				<div>RevisionDateComment</div> <div>A17.12.24Planting plans updated to accord with the relocation of the POC compound</div>		ON BEHALF		PROJECT	
						STATERA		CULHAM BATTERY ENERGY STORAGE SYSTEM	
				DATE		17.12.24		TITLE	
SCALE				1 : 1,000 @ A3		PLANTING PLAN SHEET 5 of 5			
DWG No				515_PP_05_Rev A					
APPROVED				CMcD					