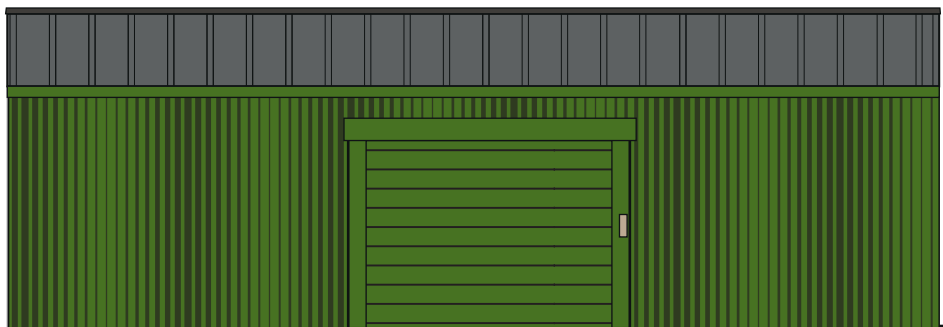


SIDE ELEVATION (Both sides identical)



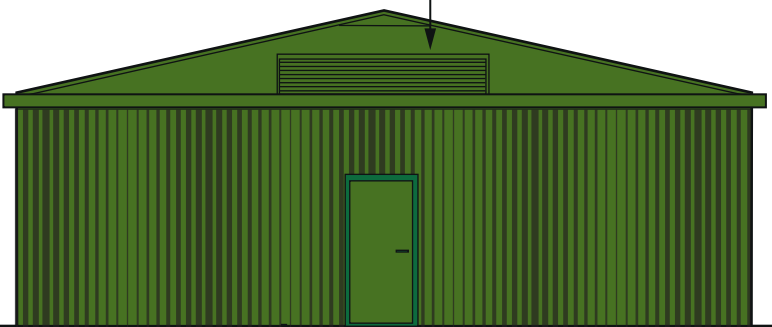
4.05m

Equipment loading door  
(roller shutter)

12m

Corrugated steel clad building  
finished in a recessive green  
with a folded metal roof,  
matt zinc finish. Exact colour  
finishes to be agreed with  
the planning authority.

Cooling system vent



3m


Door

9.5m

END ELEVATIONS  
(Both sides identical)



PLAN

 <b>STATERA</b> <small>BALANCING THE GRID</small>	Date:	10.05.23	<table><tr><th>Revision</th><th>Date</th><th>Comment</th></tr><tr><td colspan="3"><div><div>0246810 M</div></div></td></tr></table>	Revision	Date	Comment	<div><div>0246810 M</div></div>			Client:	Statera Energy Ltd
	Revision	Date		Comment							
	<div><div>0246810 M</div></div>										
Scale:	1:100 @ A3	Project:	Culham Battery Energy Storage System								
Drawing:	SD_9		Title:	Inverter House							