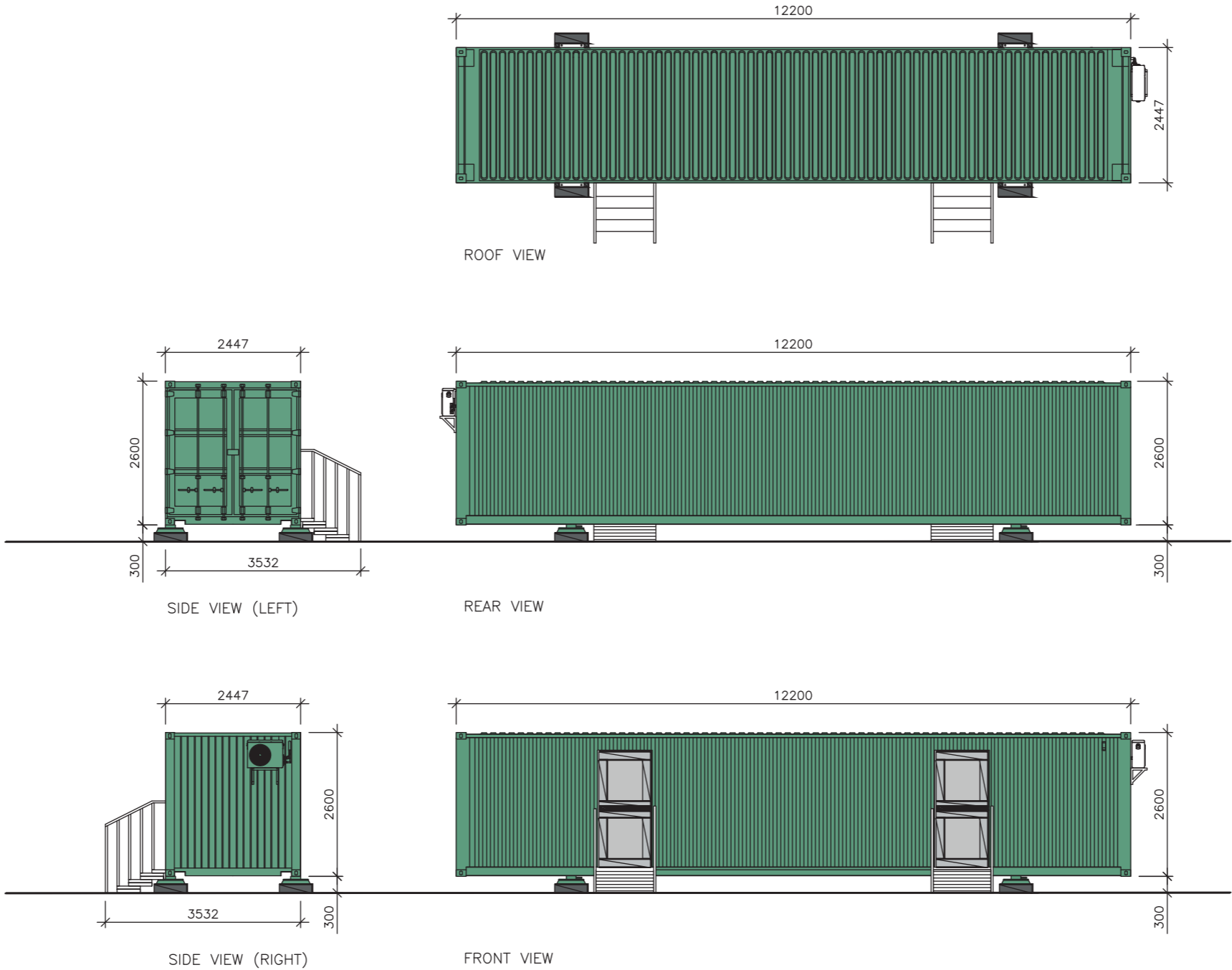



COLOUR FINISHES TO THE CONTAINERS TO BE AGREED FOLLOWING CONSULTATION WITH THE PLANNING AUTHORITY



	Date: 10.05.23	<table><thead><tr><th>Revision</th><th>Date</th><th>Comment</th></tr></thead><tbody><tr><td colspan="3"><div><div>0</div><div>2</div><div>4</div><div>6</div><div>8</div><div>10 M</div></div></td></tr></tbody></table>	Revision	Date	Comment	<div><div>0</div><div>2</div><div>4</div><div>6</div><div>8</div><div>10 M</div></div>			Client: Statera Energy Ltd
	Revision		Date	Comment					
	<div><div>0</div><div>2</div><div>4</div><div>6</div><div>8</div><div>10 M</div></div>								
Scale: 1:100 @ A3	Project: Culham Battery Energy Storage System								
Drawing: SD_8	Title: Welfare Module								

