

# TREE PROTECTION SCHEME

(ARB. METHOD STATEMENT & TREE PROTECTION PLAN)

CLIENT - Statera Energy Limited  
PROJECT - Culham  
DOC. REF - P2891-TPS01 V5  
PLANNING REF - n/a  
DATE OF ISSUE - 03/05/2024

W. [www.lignaconsultancy.co.uk](http://www.lignaconsultancy.co.uk)  
E. [info@lignaconsultancy.co.uk](mailto:info@lignaconsultancy.co.uk)  
T. 01284 598008

This report was prepared for use by the Clients and their contractors for planning and design purposes. The report and its appendices may not be copied, modified, or distributed beyond the necessary parties without the written consent of Ligna Consultancy Ltd

## TABLE OF CONTENTS

1. GENERAL INFORMATION .....	2
2. ADMINISTRATIVE DETAILS.....	2
3. RESPONSIBILITIES .....	4
4. PHASING.....	6
5. TREE WORKS .....	7
6. ARBORICULTURAL GUIDANCE NOTES .....	9
7. APPENDICES.....	12

## PURPOSE OF DOCUMENT

This document details the methodology behind the installation of any required tree protection measures, and any demolition and construction activities with the potential to cause harm to the site's trees.

The methods outlined in this document must be implemented as per this document. Failure to do so may result in a breach of planning or significant fines.

## ARBORICULTURAL DOCUMENT REGISTER

Planning Documents		Version Issued							
Document	Ref.	n/a	V1	V2	V3	V4	V5	V6	V7
Arb. Impact Assessment	P2891-AIA01		X	X	X	X	X		
Arb. Site Plan (Existing)	P2891-ASP01.0-.7		X						
Arb. Site Plan (Proposed)	P2891-ASP02.0-.7		X	X	X	X	X		

Technical Documents		Version Issued							
Document	Ref.	n/a	V1	V2	V3	V4	V5	V6	V7
Tree Protection Scheme	P2891-TPS01		X	X	X	X	X		
Tree Protection Plan	P2891-TPP01.0-.7		X	X	X	X			

## 1. GENERAL INFORMATION

### 1.1. USE OF DOCUMENT

- 1.1.1. This document has been produced to assist key design and construction personnel in ensuring the satisfactory protection of all important trees present within the development site.

### 1.2. SITE

- 1.2.1. The site discussed within this report is located at:

Culham,  
Abingdon,  
OX14 3GY

## 2. ADMINISTRATIVE DETAILS

### 2.1. SCOPE OF DOCUMENT

- 2.1.1. This document consists of the following:

- Tree Protection Scheme

- 2.1.2. Appendices included with this report are:

- Tree Protection Plan (P2891-TPP01.0-.7 V5)
- CEZ Notice
- Schedule of Arboricultural Supervision

### 2.2. PROJECT CONTACTS

Role	Name	Telephone	Email
Arboricultural Consultant	Ligna Consultancy Ltd		
Client	Statera Energy Limited	-	-

## 2.3. AUTHOR

2.3.1. Alistair Godfrey is a tree surveyor. He has worked in arboriculture for over 6 years, initially working with tree surgery firms to carry out domestic tree work operations. He has worked at Cambridge University Botanic Gardens for 3 years on the Tree and Shrub team and has experience with large-scale tree planting projects with the National Trust. He has a level 3 in arboriculture and LANTRA Professional Tree Inspection. Alistair is currently furthering his academic knowledge by undertaking a level 4 ABC qualification in arboriculture with Myerscough College in Preston.

2.3.2. This report has been checked and edited by Benjamin Hallinan MArborA.

## 2.4. LIMITATIONS

2.4.1. Any engineering solutions presented within this document are recommendations for their suitability from an arboricultural viewpoint. The architect and structural engineers should make the final decision on the suitability of the methods advised.

2.4.2. Information provided by third parties, considered in the creation of this report, is assumed to be correct.

## 2.5. COPYRIGHT

2.5.1. This report was prepared for use by the Clients and their contractors for planning purposes. The report and its appendices may not be copied, modified, or distributed beyond the necessary parties without the written consent of Ligna Consultancy Ltd



## 3. RESPONSIBILITIES

### 3.1. DISTRIBUTION

- 3.1.1. It is important to ensure everyone involved in the planning and design of the proposed development is aware of this report and has access to a copy as soon as it is released.

### 3.2. RESPONSIBILITIES

- 3.2.1. Successful implementation of tree protection measures and long-term tree retention depends on coordination between the client and key personnel involved in the development.

- 3.2.2. The client and agent shall ensure that:

<ul style="list-style-type: none"> <li>The site manager and all other personnel are provided with this document.</li> </ul>
<ul style="list-style-type: none"> <li>All planning conditions relating to underground works, services, trees, and landscaping are cleared before development commences.</li> </ul>
<ul style="list-style-type: none"> <li>All requirements of this Tree Protection Plan are adhered to.</li> </ul>
<ul style="list-style-type: none"> <li>The site manager is updated of any approved changes or variations to this document</li> </ul>

- 3.2.3. The client and site manager shall ensure that:

<ul style="list-style-type: none"> <li>A copy of this document with the plan is easily accessible for site personnel to refer to before and during the time construction activity is taking place.</li> </ul>
<ul style="list-style-type: none"> <li>All personnel working on the site are made aware of the tree protection plan and arboricultural method statements covering any activities they will undertake. This duty includes delegating the task of briefing personnel in the absence of the site manager.</li> </ul>
<ul style="list-style-type: none"> <li>The tree protection measures are left in place until the construction phase of development is completed, except with the written consent of the LPA.</li> </ul>
<ul style="list-style-type: none"> <li>Site personnel are updated of any approved changes or variations to the approved tree protection measures.</li> </ul>
<ul style="list-style-type: none"> <li>All personnel must work in accordance with this document at all times,</li> </ul>

or in accordance with approved variation.
---

### 3.3. PROCEDURES FOR INCIDENTS

3.3.1. If any breach of the approved tree protection measures occurs the site manager must:

- |  |
|--|
| <ul style="list-style-type: none"> <li>• The Local Planning Authority Tree officer or other Planning Officer and the Author of this report shall be notified.</li> </ul> |
| <ul style="list-style-type: none"> <li>• The site manager must be informed immediately.</li> </ul>   |
| <ul style="list-style-type: none"> <li>• Swift action must be taken to halt the breach and prevent any further breach.</li> </ul>  |
| <ul style="list-style-type: none"> <li>• Damage mitigation measures appropriate to the scale of the incident will be deployed where required.</li> </ul>                 |

### 3.4. PROHIBITED ACTIVITIES

3.4.1. The following must not be carried out under any circumstances:

- |   |
|---|
| <ul style="list-style-type: none"> <li>• Cutting down, uprooting, damaging or otherwise destroying any retained tree.</li> </ul>  |
| <ul style="list-style-type: none"> <li>• Lighting a fire within 10 metres of the canopy of any retained tree.</li> </ul>  |
| <ul style="list-style-type: none"> <li>• Equipment, signage, fencing, tree protection barriers, materials, components, vehicles or structures shall not be attached to or supported by a retained tree.</li> </ul>  |
| <ul style="list-style-type: none"> <li>• Mixing cement, chemical toilets and other use or storage of anything that would be harmful to trees shall not take place within, or close to a Root Protection Area (RPA). The distance away from the RPA must be sufficient, and the slope of the site must be such that contamination of soil in the RPA would not occur if there were spillage, seepage or displacement.</li> </ul> |
| <ul style="list-style-type: none"> <li>• No plant or equipment or vehicle with a hydraulic arm such as a mini digger shall be operated within striking distance of the stem and branches or the RPA of any retained tree unless otherwise specified in this report.</li> </ul>  |

3.4.2. No alterations or variations shall be made to the approved tree protection measures without written approval from the LPA.

## 4. PHASING

### 4.1. PHASING OF DEVELOPMENT

- 4.1.1. The development should be carried out in the following order (see table 1) unless otherwise agreed in writing with the LPA. Each step should be completed before moving onto the next.
- 4.1.2. The general responsibilities described in section 3 of the report must be implemented for the entire time that the site is undergoing development related works. However, the additional precautions detailed in the following arboricultural guidance notes (AGN) must be implemented at the stage indicated below.

Stage	Arboricultural Guidance Note	Plan
Facilitative Tree Works	* Works should be undertaken by suitably qualified and insured arborists, in line with 'BS 3998:2010 Tree Work. Recommendations'	Arb Site Plan (Proposed) (P2891-ASP02.0-.7 V5)
Pre-Commencement	AGN1 – Installation of Tree Protection Barriers	Tree Protection Plan (P2891-TPP01.0-.7 V5)
Site Clearance & Demolition		
Groundworks & Installation of Foundations		
Construction		
Removal of Tree Protection Measures	* Tree protection measures may be removed	
Landscaping		

Table 1 – Timing and implementation of specific arboricultural measures

## 5. TREE WORKS

### 5.1. TREE WORK REQUIREMENTS

5.1.1. The following tree work should be undertaken following acceptance of planning permission. These works should be undertaken by suitably qualified and insured arborists.

5.1.2. Work specification:

Ref.	Species	Development Related Tree Works	Cat.
T2	Quercus cerris. (Turkey Oak)	Remove	B1
T3	Quercus cerris. (Turkey Oak)	Remove	B1
T4	Quercus cerris. (Turkey Oak)	Remove	B1
T5	Quercus robur (English oak)	Remove	B2
T6	Quercus cerris. (Turkey Oak)	Remove	B1
T7	Quercus cerris. (Turkey Oak)	Remove	B1
T17	Quercus robur (English oak)	Remove	C1
T18	Quercus robur (English oak)	Remove	C1
G5	Betula pendula (Silver birch)	Remove	B2
G6	Mixed group	Remove	C1
G7	Mixed group	Remove	C1
G11	Populus spp. (Poplar)	Remove	C1

Table 2 – Facilitation Tree Works

5.1.3. The location of the trees can be seen on the Arboricultural Site Plan (P2891-ASP02 V5). Trees selected for removal will be shown with a dashed canopy outline.

### 5.2. GENERAL MANAGEMENT RECOMMENDATIONS

5.2.1. The following tree works are in the interests of good arboricultural management. These should be undertaken following acceptance of planning permission. These works should be undertaken by suitably qualified and insured arborists.

## 5.2.2. Work specification:

Tree Ref.	Tree Works
T10	Remove snapped branches.
T12	Remove epicormic growth.
G18	Remove all scrub under pylon.

*Table 3 – Recommended Tree Works (General Management)*

## 6. ARBORICULTURAL GUIDANCE NOTES

### AGN1 – INSTALLATION OF TREE PROTECTION BARRIERS

#### OUTLINE

*Tree protection barriers must be installed so as to ensure that damage does not occur to the rooting areas, stems, and canopies of retained trees.*

#### INSTALLATION METHODOLOGY

- i) The barriers shall be installed and removed in accordance with the timing of operations in section 4.1 and laid out in accordance with the appended Tree Protection Plan.
- ii) The “CEZ Notice” provided, should be used to create weather-proof notices that must be attached to the tree protection barriers at suitable intervals.
- iii) If any panel or support becomes damaged, immediate reinforcement must occur by adding panels in, compliant with the specification detailed below.
- iv) The default heavy-duty tree protection barrier specification is a vertical and horizontal scaffold framework, braced to resist impacts, as per *Figure 1*. The vertical tubes are spaced at a maximum interval of 3 metres and these are driven securely into the ground. Welded mesh panels are securely attached to the frame. During installation, it is important to consider the position of below ground services and structural roots, which must not be damaged. Where these constraints prevent the use of this specification, an alternative specification is given below.
- v) Alternative heavy-duty tree protection barrier design - 2-metre-tall welded mesh panels standing in rubber or concrete feet joined using a minimum of two anti-tamper couplers installed, so they can only be removed from inside the protected area. The fence couplers should be at spaced least 1 metre apart, but uniformly across the whole barrier. These panels must be supported within the protected area with struts attached to a base plate secured by ground pins as per *Figure 2a*.
- vi) Where the fencing is installed above retained hard surfacing and/or it is otherwise not feasible to use ground pins (e.g. due to underlying services or structural roots), the struts can be mounted on a block tray as per *Figure 2b*.
- vii) Arboricultural Sign-off – Following the installation of the barriers, the project’s arboricultural expert must confirm that they have been correctly laid out.

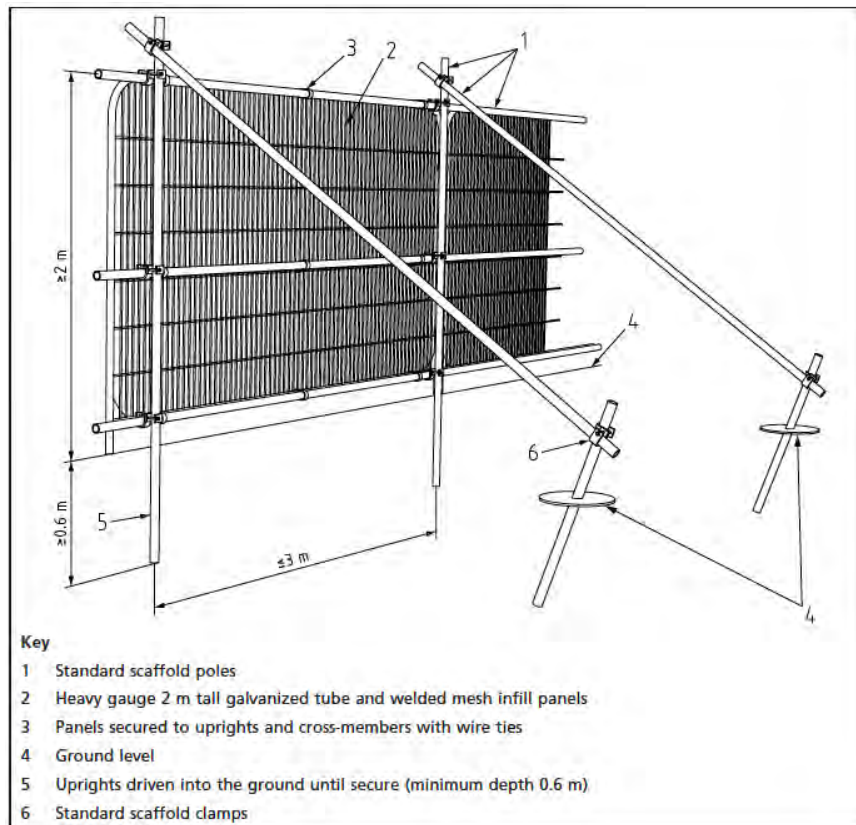


Figure 1 – Conventional tree protection barrier specification (source - BS 5837:2012 Section 6)

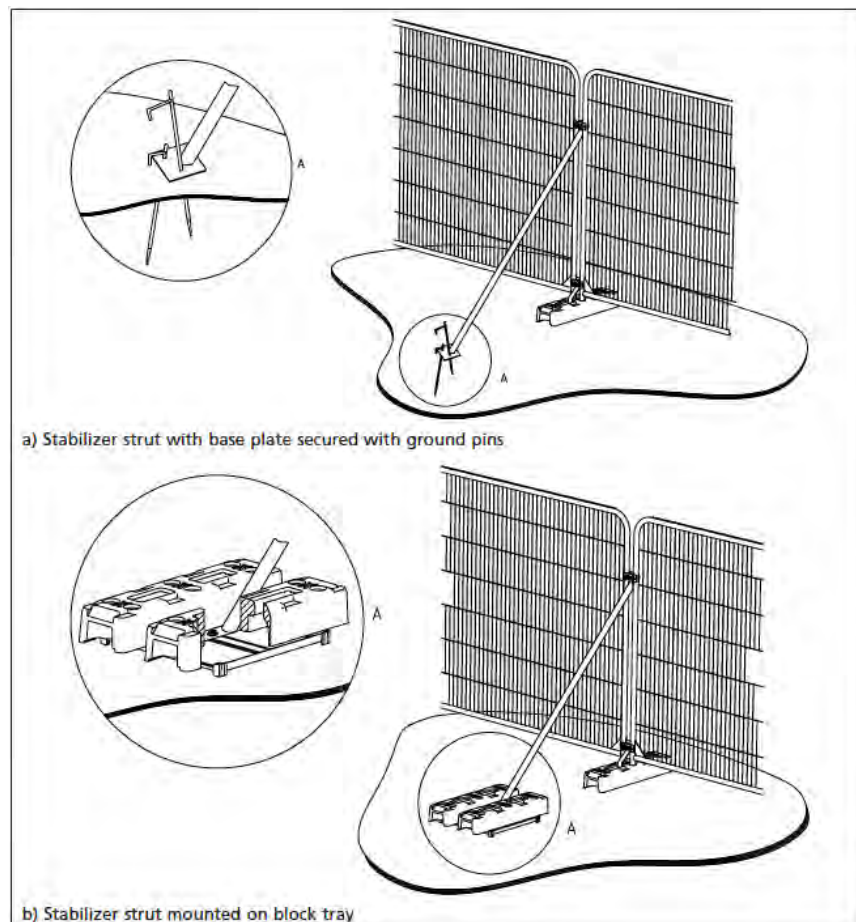


Figure 2 – Above ground stabilising systems (source - BS 5837:2012 Section 6)



## RECOMMENDED PRODUCTS

Product Type	Product Name	Supplier	Website
Tree Protection Barriers	Heras	Heras	<a href="https://www.heras-mobile.co.uk/fencing/mesh-panels">https://www.heras-mobile.co.uk/fencing/mesh-panels</a>

## 7. APPENDICES

### 7.1. APPENDICES

7.1.1. The following appendices should be used in conjunction with this document:

Appendix	Document	Reference
1	Tree Protection Plan	P2891-TPP01.0-.7 V5
2	CEZ Notice	n/a
3	Schedule of Arboricultural Supervision	n/a

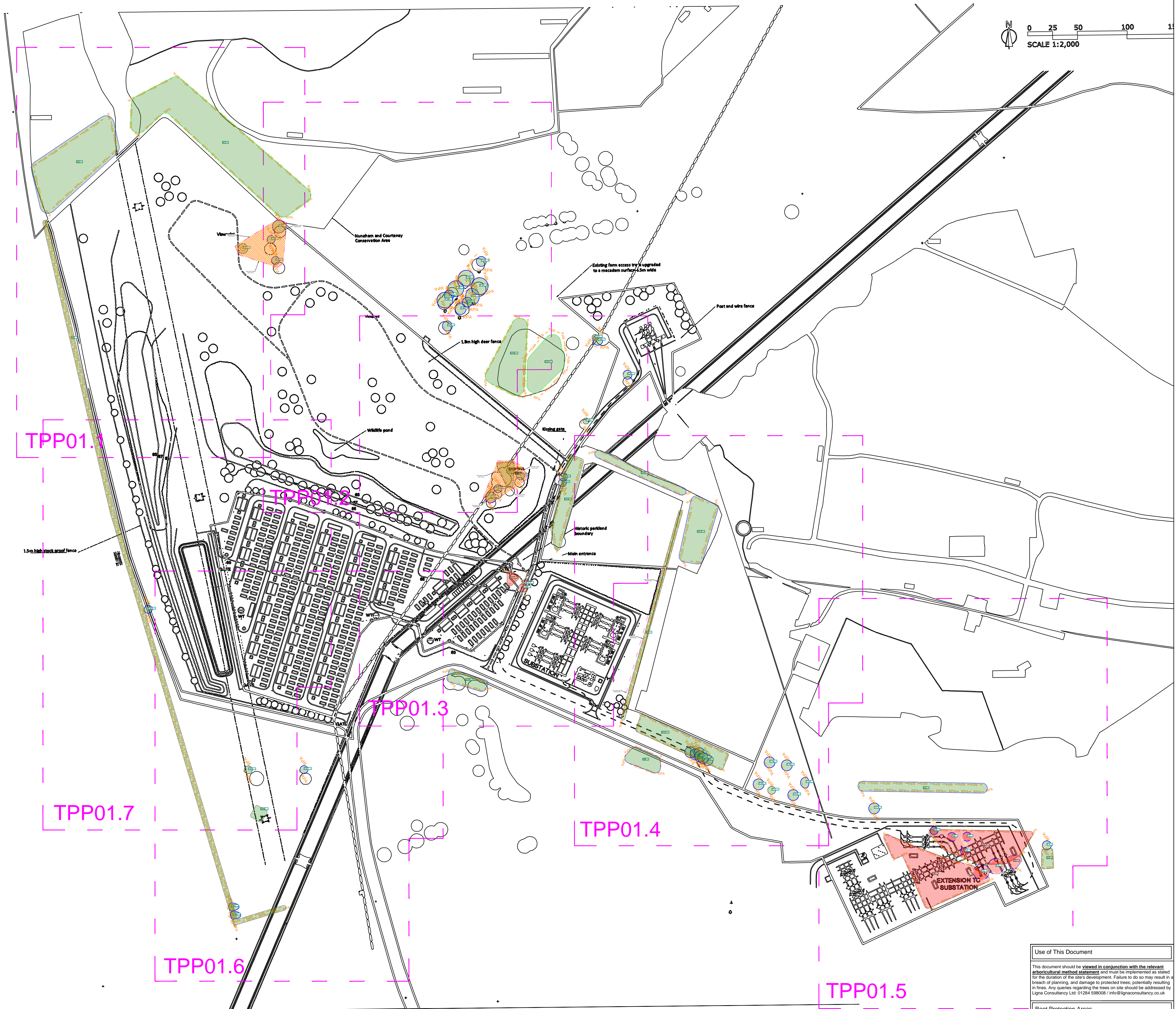
---

# APPENDIX 1

## TREE PROTECTION PLAN

---





Use of This Document

This document should be viewed in conjunction with the relevant arboricultural method statement and must be implemented as stated for the duration of the site's development. Failure to do so may result in a breach of planning, and damage to protected trees, potentially resulting in fines. Any queries regarding the trees on site should be addressed by Ligna Consultancy Ltd. 01284 588008 / info@lignaconsultancy.co.uk or arboricultural services.

Root Protection Areas

The enforcement of root protection areas (RPAs) is vital for the successful retention of a site's trees during the development process. RPAs that are not covered by ground protection must not be subjected to the following activities unless otherwise stated within the Tree Protection Plan or Arboricultural Method Statement:

- materials storage
- pedestrian / vehicular movement
- excavation or soil level increase
- installation of new surfacing
- car parking
- mixing of cement
- any other infringement

Should any issues arise from the enforcement of root protection areas restricting necessary site works, the site manager should be informed, and the project's arboriculturalist contacted.

Incursions within RPAs

Excavation	Arb. Sensitive Demolition / Removal

Specialist Foundations/Surfacing and Site Features

Specialist Foundations	Pile / Screw Pile	Culvert TRP	Demolished Building

Tree Protection Measures (Refer to Technical Specification)

Barriers - Stone and Mesh	Barriers - Metal Fencing	Stem Protection	Temporary Ground Protection

CEZ

Culham

Statera Energy Limited

Tree Protection Plan (.0)

P2891-TPP01.0

V5

02/05/2024

NTS - A1

B. Hallinan

221202\_SL254\_L\_X\_GA\_1\_Culham\_BlockPlan

All dimensions should be checked on site. No dimensions to be relied upon in this drawing. Please verify all of any discrepancies from Ligna Consultancy Ltd. cannot be held responsible for inaccuracies in the base drawing in which this plan is based. This drawing is designed to reflect the principles of the layout or design only, and is not a final design. It is not to be used for construction purposes. It is not to be used for any other purpose.

An arborist or structural engineer should be consulted over any matters of construction, detailing or specification and for any variations or regulatory requirements relate to proposed structures. Take account of any relevant services.

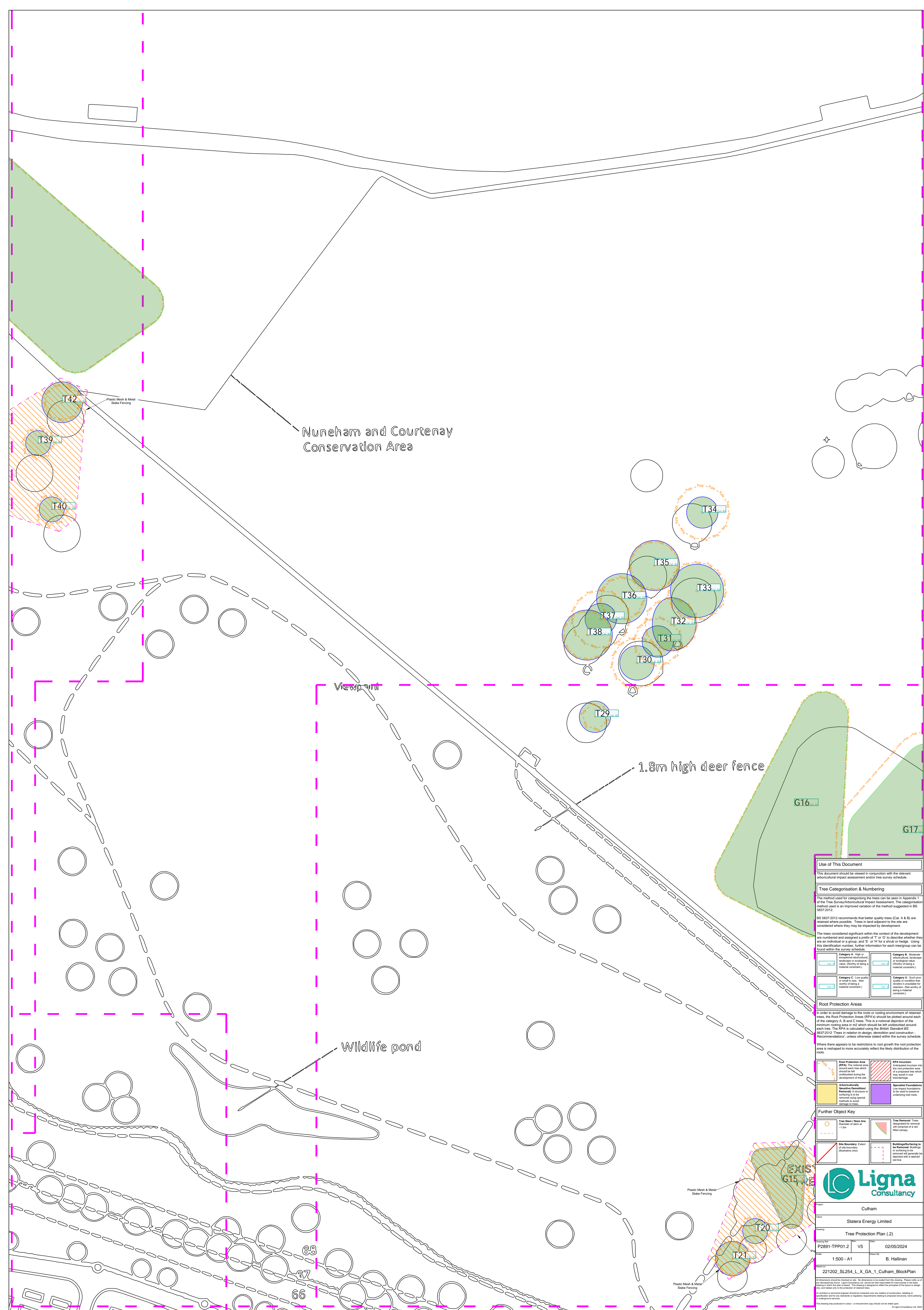
This drawing was produced in colour - a monochrome copy should not be relied upon.

© Ligna Consultancy LTD 2021

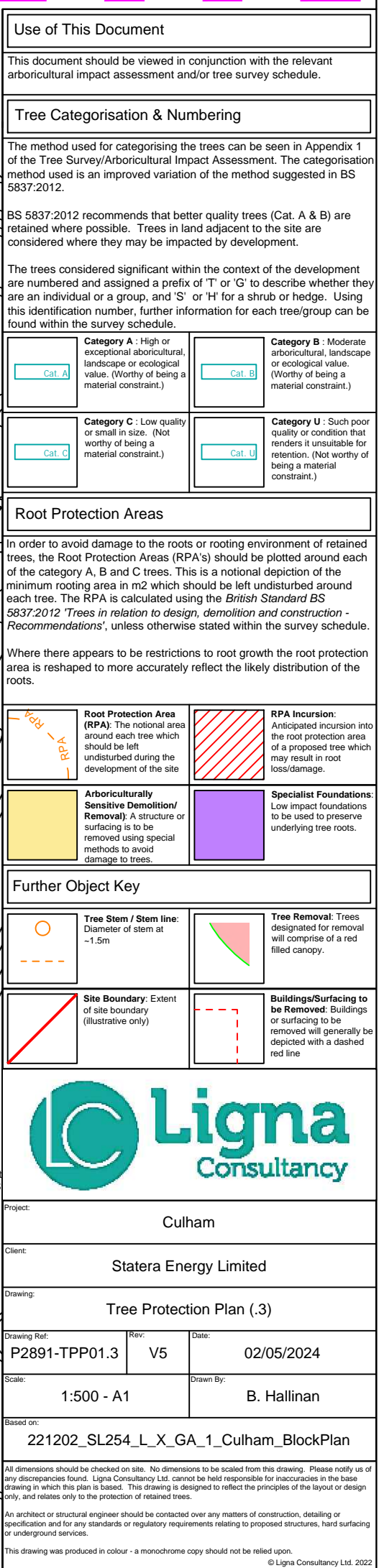




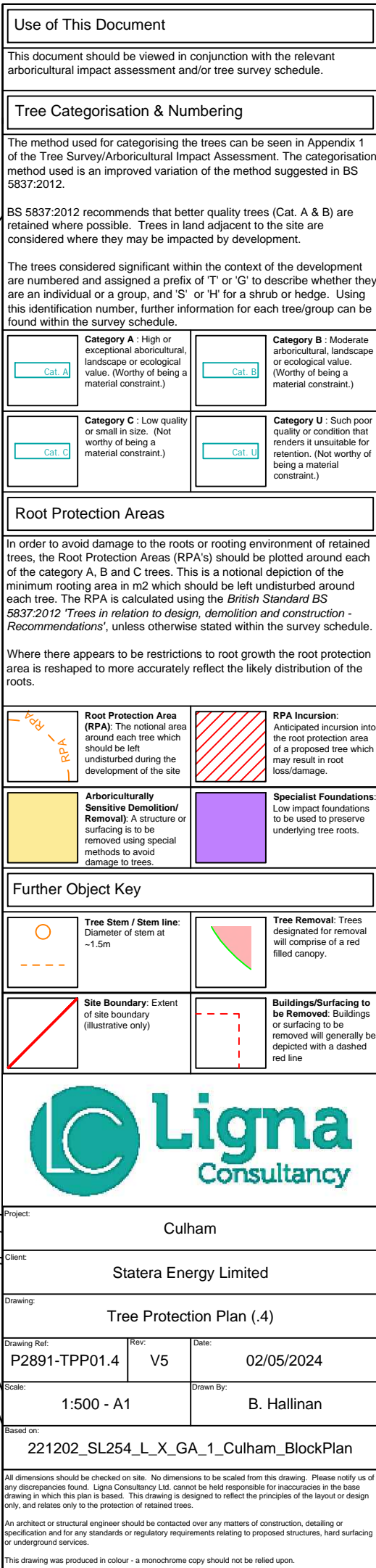




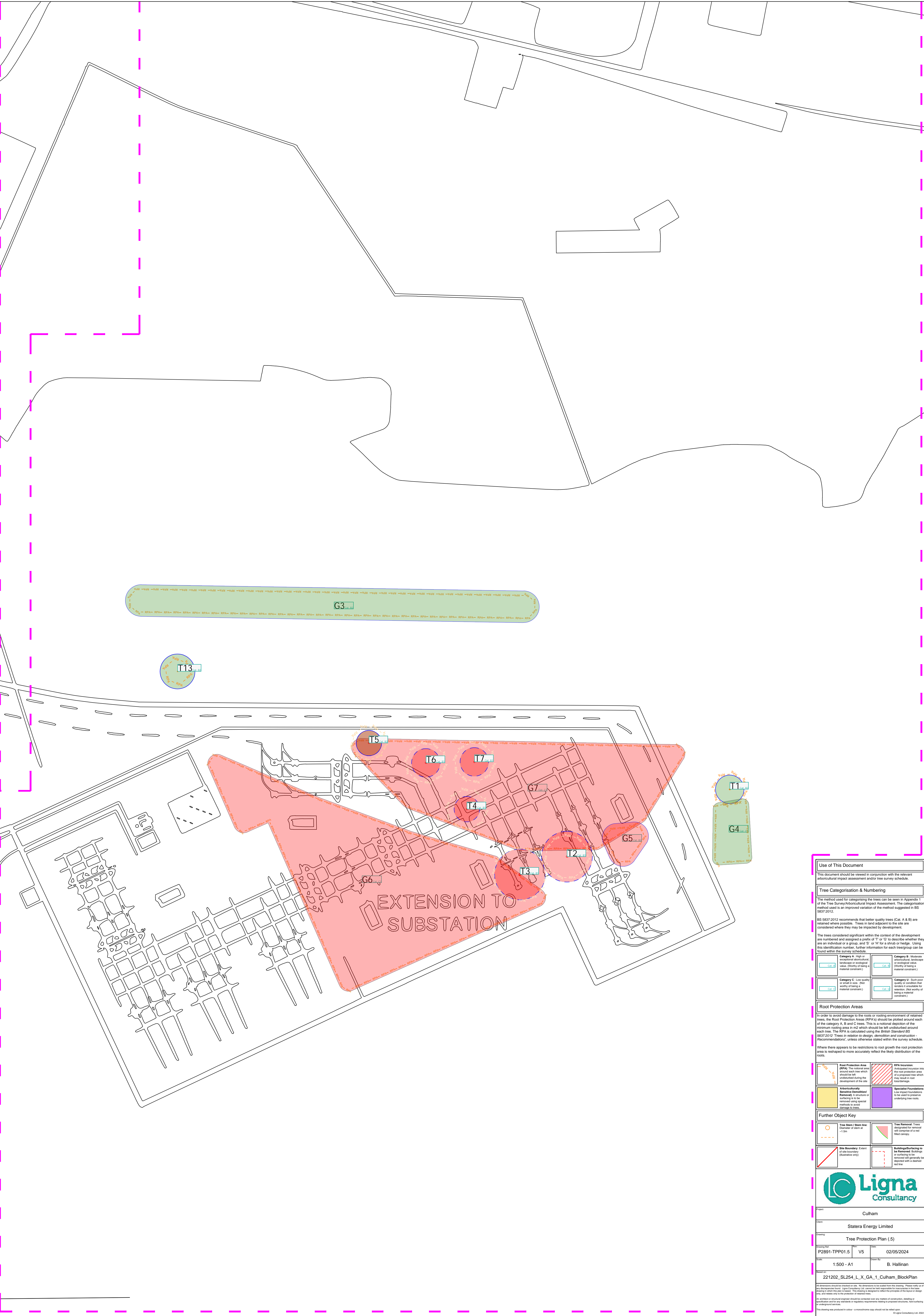












Use of This Document

This document should be viewed in conjunction with the relevant arboricultural impact assessment and/or tree survey schedule.

Tree Categorisation & Numbering

The method used for categorising the trees can be seen in Appendix 1 of the Tree Survey/Arboricultural Impact Assessment. The categorisation method used is an improved variation of the method suggested in BS 5837:2012.

BS 5837:2012 recommends that better quality trees (Cat. A & B) are retained where possible. Trees in land adjacent to the site are considered where they may be impacted by development.

The trees considered significant within the context of the development are numbered and assigned a prefix of 'T' or 'G' to describe whether they are an individual or a group, and 'S' or 'M' for a shrub or hedge. Using this identification number, further information for each tree/group can be found within the survey schedule.

<div>Category A - High or exceptional arboricultural, landscape or ecological value. (Worthy of being a material constraint.)</div> <div>Col. A</div>	<div>Category B - Moderate arboricultural, landscape or ecological value. (Worthy of being a material constraint.)</div> <div>Col. B</div>
<div>Category C - Low quality or small in size. (Not worthy of being a material constraint.)</div> <div>Col. C</div>	<div>Category U - Such poor quality or condition that renders it unsuitable for retention. (Not worthy of being a material constraint.)</div> <div>Col. U</div>

Root Protection Areas

In order to avoid damage to the roots or rooting environment of retained trees, the Root Protection Areas (RPAs) should be plotted around each of the category A, B and C trees. This is a notional depiction of the minimum rooting area in m<sup>2</sup> which should be left undisturbed around each tree. The RPA is calculated using the British Standard BS 5837:2012 'Trees in relation to design, demolition and construction - Recommendations', unless otherwise stated within the survey schedule.

Where there appears to be restrictions to root growth the root protection area is reshaped to more accurately reflect the likely distribution of the roots.

<div>Root Protection Area (RPA): The notional area around each tree which should be left undisturbed during the development of the site.</div> <div>Col. RPA</div>	<div>RPA Incursion: Anticipated incursion into the root protection area of a protected tree which may result in root loss/damage.</div>
<div>Arboricultural Sensitive Demolition/Removal: A structure or surfacing is to be removed using special methods to avoid damage to roots.</div>	<div>Specialist Foundations: Low impact foundations to be used to preserve underlying tree roots.</div>

Further Object Key

<div>Tree Stem / Stem Line: Diameter of stem at <math>\geq 1.5m</math>.</div>	<div>Tree Removal: Trees designated for removal will comprise of a root filled canopy.</div>
<div>Site Boundary: Extent of site boundary (illustrative only).</div>	<div>Buildings/Surfacing to be Removed: Buildings or surfacing to be removed will generally be indicated with a dashed red line.</div>

Project

Culham

Client

Statera Energy Limited

Drawing

Tree Protection Plan (.5)

Drawing Ref

P2891-TPP01.5

V5

Date

02/05/2024

Scale

1:500 - A1

Drawn By

B. Hallinan

Based on

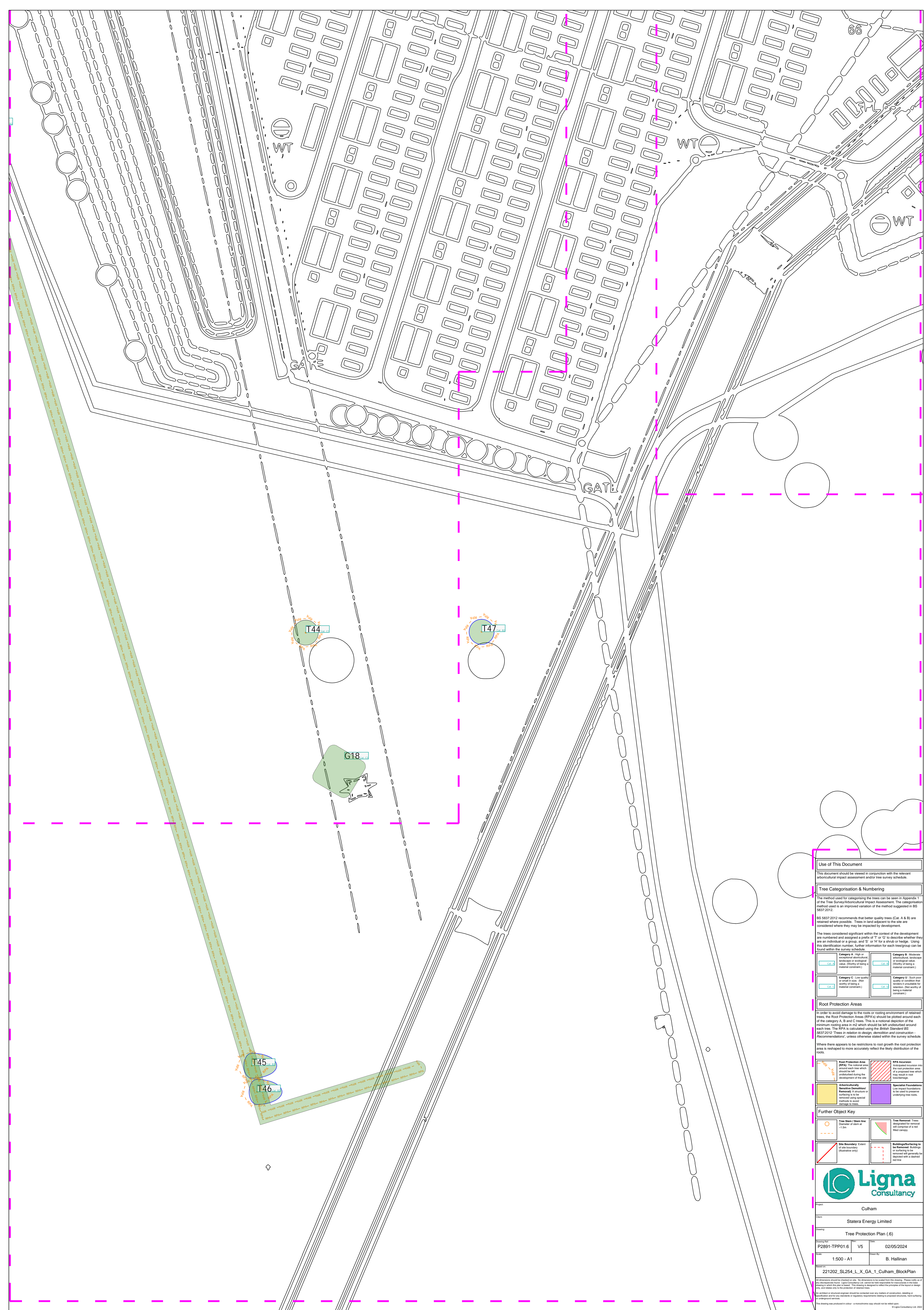
221202\_SL254\_L\_X\_GA\_1\_Culham\_BlockPlan

All dimensions should be checked on site. No dimensions to be relied upon for this drawing. Please verify all of the dimensions shown. Ligna Consultancy Ltd cannot be held responsible for inaccuracies in the data being used in which the plan is based. This drawing is designed to reflect the principles of the layout or design and does not constitute a contract. It is not to be used for any other purpose or for any other project. It is not to be used for any other purpose or for any other project. It is not to be used for any other purpose or for any other project.

This drawing was produced in colour - a monochrome copy should not be relied upon.

Ligna Consultancy Ltd 2022





### Use of This Document

This document should be viewed in conjunction with the relevant arboricultural impact assessment and/or tree survey schedule.

### Tree Categorisation & Numbering

The method used for categorising the trees can be seen in Appendix 1 of the Tree Survey/Arboricultural Impact Assessment. The categorisation method used is an improved variation of the method suggested in BS 5837:2012.

BS 5837:2012 recommends that better quality trees (Cat. A & B) are retained where possible. Trees in land adjacent to the site are considered where they may be impacted by development.

The trees considered significant within the context of the development are numbered and assigned a prefix of 'T' or 'G' to describe whether they are an individual or a group, and 'S' or 'H' for a shrub or hedge. Using this identification number, further information for each tree/group can be found within the survey schedule.

<p><b>Category A:</b> High or exceptional aboriginal, landscape or ecological value. (Worthy of being a material constraint.)</p> <p>Cat. A</p>	<p><b>Category B:</b> Moderate aboriginal, landscape or ecological value. (Worthy of being a material constraint.)</p> <p>Cat. B</p>
<p><b>Category C:</b> Low quality or small in size. (Not worthy of being a material constraint.)</p> <p>Cat. C</p>	<p><b>Category U:</b> Such poor quality or condition that it renders it unsuitable for retention. (Not worthy of being a material constraint.)</p> <p>Cat. U</p>

## Root Protection Areas

In order to avoid damage to the roots or rooting environment of retained trees, the Root Protection Areas (RPA's) should be plotted around each of the category A, B and C trees. This is a notional depiction of the minimum rooting area in m<sup>2</sup> which should be left undisturbed around each tree. The RPA is calculated using the British Standard BS 5837:2012 'Trees in relation to design, demolition and construction - Recommendations', unless otherwise stated within the survey schedule.

Where there appears to be restrictions to root growth the root protection area is reshaped to more accurately reflect the likely distribution of the roots.

	<p><b>Root Protection Area (RPA):</b> The notional area around each tree which should be left undisturbed during the development of the site</p>		<p><b>RPA Incursion:</b> Anticipated incursion into the root protection area of a proposed tree which may result in root loss/damage.</p>
	<p><b>Anbericburelly Sensitive Demolition/Removal:</b> A structure or surfacing is to be removed using special methods to avoid damage to roots.</p>		<p><b>Specialist Foundations:</b> Low impact foundations to be used to preserve underlying tree roots.</p>

## Further Object Key

	<p><b>Tree Stem / Stem line:</b> Diameter of stem at ~1.5m</p>		<p><b>Tree Removal:</b> Trees designated for removal will comprise of a red filled canopy.</p>
	<p><b>Site Boundary:</b> Extent of site boundary (illustrative only)</p>		<p><b>Buildings/Surfacing to be Removed:</b> Buildings or surfacing to be removed will generally be depicted with a dashed red line</p>



Project		Culham	
Client		Statera Energy Limited	
Drawing			
Tree Protection Plan (.6)			
Drawing Ref	Rev	Date	
P2891-TPP01.6	V5	02/05/2024	
Scale		Drawn by	
1:500 - A1		B. Hallinan	
Issued on			
221020 SL254 L X GA 1 Culham BlockPlan			

All dimensions should be checked on site. No dimensions to be scaled from this drawing. Please notify us of any discrepancies found. Ligna Consultancy Ltd. cannot be held responsible for inaccuracies in the base drawing in which this plan is based. This drawing is designed to reflect the principles of the layout or design only, and relates only to the protection of retained trees.

An architect or structural engineer should be contacted over any matters of construction, detailing or specification and for any standards or regulatory requirements relating to proposed structures, hard surfacing or underground services.

This drawing was produced in colour - a monochrome copy should not be relied upon.



stock proof fence

Use of This Document

This document should be viewed in conjunction with the relevant Arboricultural Impact Assessment and/or tree survey schedule.

Tree Categorisation & Numbering

The method used for categorising the trees can be seen in Appendix 1 of the Tree Survey/Arboricultural Impact Assessment. The categorisation method used is an improved variation of the method suggested in BS 5837:2012.

BS 5837:2012 recommends that better quality trees (Cat. A & B) are retained where possible. Trees in land adjacent to the site are considered where they may be impacted by development.

The trees considered significant within the context of the development are numbered and assigned a prefix of 'T' or 'G' to describe whether they are an individual or a group, and 'S' or 'H' for a shrub or hedge. Using this identification number, further information for each tree/group can be found within the survey schedule.

<b>Category A:</b> High or important cultural, landscape or ecological value. (Worthy of being a material constraint.)	<b>Category B:</b> Moderate cultural, landscape or ecological value. (Worthy of being a material constraint.)
<b>Category C:</b> Low quality or small in size. (Not worthy of being a material constraint.)	<b>Category U:</b> Such poor quality or condition that renders it unsuitable for retention. (Not worthy of being a material constraint.)

#### Root Protection Areas

In order to avoid damage to the roots or rooting environment of retained trees, the Root Protection Areas (RPAs) should be plotted around each of the category A, B and C trees. This is a notional depiction of the minimum rooting area in m<sup>2</sup> which should be left undisturbed around each tree. The RPA is calculated using the British Standard BS 5837:2012 'Trees in relation to design, demolition and construction - Recommendations', unless otherwise stated within the survey schedule.

Where there appears to be restrictions to root growth the root protection area is reshaped to more accurately reflect the likely distribution of the roots.

<b>Root Protection Area (RPA):</b> The notional area around each tree which should be left undisturbed during the development of the site.	<b>RPA Incursion:</b> Anticipated incursion into the root protection area of a protected tree which may result in root loss/damage.
<b>Arboriculture/Removal:</b> A structure or surfacing is to be removed using special methods to avoid damage to roots.	<b>Specialist Foundations:</b> Low impact foundations to be used to preserve underlying tree roots.

#### Further Object Key

<b>Tree Seen / Seen line:</b> Diameter of stem at $\geq 1.5m$ .	<b>Tree Removal:</b> Trees designated for removal will complete a red filled canopy.
<b>Site Boundary:</b> Extent of site boundary (illustrative only).	<b>Buildings/Surfacing to be Removed:</b> Buildings or surfacing to be removed will generally be indicated with a dashed red line.



Client	Culham
Client	Statera Energy Limited
Drawing	Tree Protection Plan (.7)
Drawing Ref	P2891-TPP01.7
Version	V5
Date	02/05/2024
Scale	1:500 - A1
Drawn By	B. Hallinan
Based on	221202_SL254_L_X_GA_1_Culham_BlockPlan

All dimensions should be checked on site. No dimensions to be ruled from this drawing. Please verify all of the dimensions shown. Ligna Consultancy Ltd cannot be held responsible for misinterpretation or use of the drawing in which the user is bound. This drawing is designed to reflect the principles of the layout or design and is not a guarantee of any nature or quantity of any requirements relating to proposed structures. Notwithstanding to any other drawings or specifications, this drawing shall prevail in the event of any conflict.

An architect or structural engineer should be contacted over any matters of construction, detailing or specifications and for any structural or engineering requirements relating to proposed structures. Notwithstanding to any other drawings or specifications, this drawing shall prevail in the event of any conflict.

This drawing was produced in colour - monochrome copy should not be relied upon.

© Ligna Consultancy Ltd 2024



---

# APPENDIX 2 CEZ NOTICE

---

# NO ENTRY



## CONSTRUCTION EXCLUSION ZONE

This area contains trees which must be protected as part of the planning permission. Additional legal protection may also apply e.g. a Tree Preservation Order.

Removing or damaging trees in this area may be a breach in planning permission. Damage to protected trees may lead to a criminal conviction and / or a fine.

Should any issues arrive regarding the tree protection or its layout, please contact Ligna Consultancy Ltd for advice:

info@lignaconsultancy.co.uk  
01284 598008

---

# APPENDIX 3

## SCHEDULE OF SUPERVISION

---



## APPENDIX 3 – SCHEDULE OF ARBORICULTURAL SUPERVISION

Date:

Planning Ref:

This statement is to confirm that ..... of ..... has undertaken the following supervision activities for the development at Culham; ensuring that any deviation from the approved tree protection scheme is recorded and appropriate action is undertaken.

Liability for any failure of compliance will remain with the client.

### Arboricultural Sign-Off

The correct installation of the approved tree protection measures must be confirmed by the project's arboriculturalist in the table below. No further demolition or construction activities may occur until approval has been given by the project's arboriculturalist.

Failure to abide by the following schedule may result in a breach of planning. Any deviation from the agreed upon protection measures must be reported to the project arboriculturalist immediately.

Activity	Date of Visit	Protection Measures Compliant	Remedial Action Required
Pre-commencement site meeting			
Sign-off of correct installation of tree protection measures (pre-construction)			



W. [www.lignaconsultancy.co.uk](http://www.lignaconsultancy.co.uk)  
E. [info@lignaconsultancy.co.uk](mailto:info@lignaconsultancy.co.uk)  
T. 01284 598008

This report was prepared for use by the Clients and their contractors for planning and design purposes. The report and its appendices may not be copied, modified, or distributed beyond the necessary parties without the written consent of Ligna Consultancy Ltd