



Plate 5: View of site looking across towards north and Nuneham Courtenay Registered Park and Garden and Conservation Area



Plate 7: View towards northeast across eastern part of site towards Nuneham Courtenay Registered Park and Garden



Plate 6: View towards northeast focusing on potential earthwork



Plate 8: View across the eastern part of the site





Plate 9: Extract of Aerial Photograph Ref. US/13PH/581 (June 1943) as held by Historic England at Swindon Archive



Plate 11: Extract of Aerial Photograph Ref. SU5396/5 (2000) as held by Historic England at Swindon Archive



Plate 10: Extract of Aerial Photograph Ref. US/7PH/GP/LOC107 (December 1943) as held by Historic England at Swindon Archive

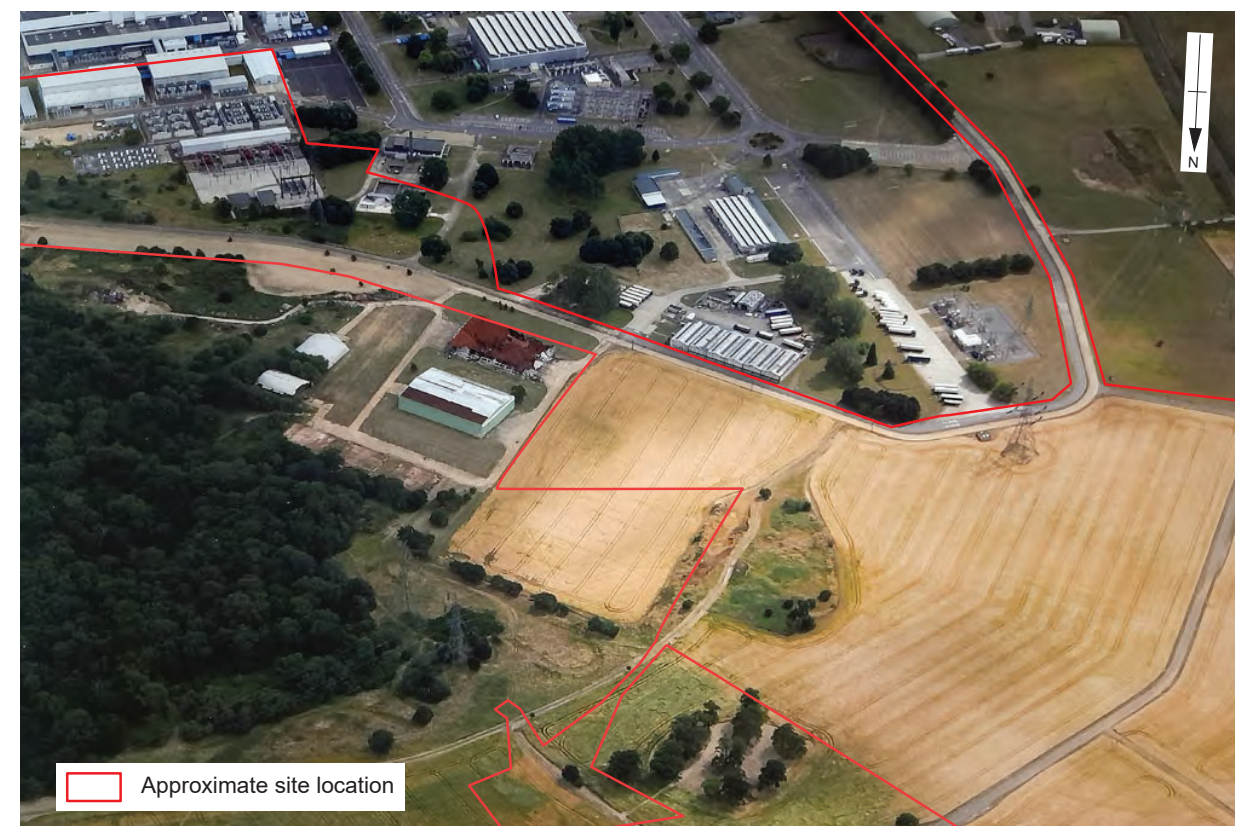


Plate 12: Extract of Aerial Photograph Ref. SU5396/7 (2006) as held by Historic England at Swindon Archive





Plate 13: View from Nuneham Courtenay Registered Park and Garden looking across the site towards southeast and the Culham Science Centre



**Head Office/Registered Office/  
OASouth**

Janus House  
Osney Mead  
Oxford OX2 0ES

t: +44 (0) 1865 263 800  
f: +44 (0) 1865 793 496  
e: [info@oxfordarchaeology.com](mailto:info@oxfordarchaeology.com)  
w: <http://oxfordarchaeology.com>

**OANorth**

Mill 3  
Moor Lane  
Lancaster LA1 1QD

t: +44 (0) 1524 541 000  
f: +44 (0) 1524 848 606  
e: [oanorth@oxfordarchaeology.com](mailto: oanorth@oxfordarchaeology.com)  
w: <http://oxfordarchaeology.com>

**OAEast**

15 Trafalgar Way  
Bar Hill  
Cambridgeshire  
CB23 8SQ

t: +44 (0) 1223 850500  
e: [oaeast@oxfordarchaeology.com](mailto: oaeast@oxfordarchaeology.com)  
w: <http://oxfordarchaeology.com>



Chief Executive Officer  
Ken Welsh, BSc, MCIFA  
Oxford Archaeology Ltd is a  
Private Limited Company, N<sup>o</sup>: 1618597  
and a Registered Charity, N<sup>o</sup>: 285627