

# CARFAX CONDUIT

Listed on the National Heritage List for England. [Search over 400,000 listed places](#)

(<https://historicengland.org.uk/listing/the-list/>)

## Official list entry

Heritage Category:**Listed Building**

Grade:**I**

List Entry Number:**1193569**

Date first listed:**18-Jul-1963**

List Entry Name:**CARFAX CONDUIT**

Statutory Address 1:**CARFAX CONDUIT**

This List entry helps identify the building designated at this address for its special architectural or historic interest.

Unless the List entry states otherwise, it includes both the structure itself and any object or structure fixed to it (whether inside or outside) as well as any object or structure within the curtilage of the building.

For these purposes, to be included within the curtilage of the building, the object or structure must have formed part of the land since before 1st July 1948.

### Understanding list entries

(<https://historicengland.org.uk/listing/the-list/understanding-list-entries/>)

### Corrections and minor amendments

**(<https://historicengland.org.uk/listing/the-list/minor-amendments/>)**

## Location

Statutory Address:**CARFAX CONDUIT**

The building or site itself may lie within the boundary of more than one authority.

County:**Oxfordshire**

District:**South Oxfordshire (District Authority)**

Parish:**Nuneham Courtenay**

National Grid Reference:**SU5372497669**

## Details

NUNEHAM COURTENAY NUNEHAM PARK SU59NW 4/95 Carfax Conduit 18/07/63

GV I

Conduit, now eyecatcher. 1617 by John Clarke, mason, for Otho Nicholson; 1686 lower part rebuilt, probably by Thomas Wood, mason; 1789 removed to Nuneham Park by the 2nd Earl Harcourt. Limestone ashlar. Square plan. Each face of the lower stage has a recessed panel, flanking pilasters, and an entablature with a triglyph frieze incorporating the arms of Oxford and the University. The ornamental pierced balustrade includes the letters ONON on each face and has a cresting of standing figures, obelisks and cartouches with heraldic beasts at the angles. From within the parapet 4 ornamental flying buttresses support an octagonal superstructure containing 8 niches with standing figures between mermaid caryatids. The openwork dome, covered with fish-scales, has a border of 8

figures and a finial comprising 2 figures back to back. The decoration forms a complicated allegory with many allusions to the original function of the conduit. Tablets on 2 sides of the lower structure commemorate, in English and Latin, the setting up of the conduit in the park. A focal point of the important landscape by Lancelot Brown. (Nuneham Park is included in the HBMC County Register of Gardens at Grade I ; V.C.H.: Oxfordshire, Vo1.V, p.234; Buildings of England: Oxfordshire, p.728; C, Cole, "Carfax Conduit", Oxoniensia, Vols. 29 and 30, 1964/5, pp.142-166)

Listing NGR: SU5372497669

## Legacy

The contents of this record have been generated from a legacy data system.

Legacy System number:**248332**

Legacy System:**LBS**

## Sources

### Books and journals

Salzman, L F, The Victoria History of the County of Oxford, (1957), 728

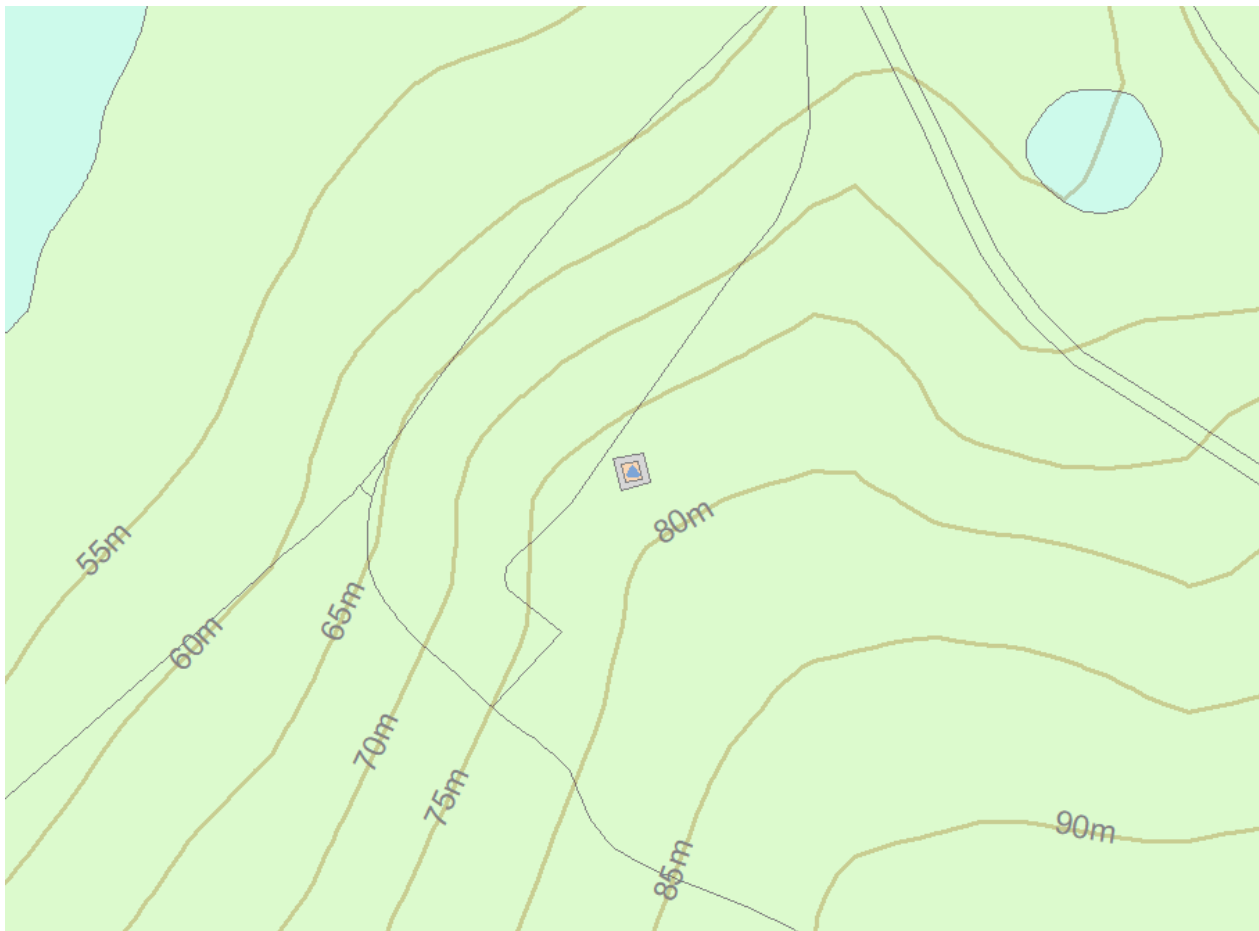
'Oxoniensia' in Oxoniensia, , Vol. 29, (1965), 142-166

### Other

Register of Parks and Gardens of Special Historic Interest in England, Part 34 Oxfordshire

## Legal

This building is listed under the Planning (Listed Buildings and Conservation Areas) Act 1990 as amended for its special architectural or historic interest.



## Map

This map is for quick reference purposes only and may not be to scale. This copy shows the entry on 17-Mar-2025 at 13:15:05.

---

© Crown copyright [and database rights] 2025. OS AC0000815036. All rights reserved. Ordnance Survey Licence number 100024900.© British Crown and SeaZone Solutions Limited 2025. All rights reserved. Licence number 102006.006.

**End of official list entry**